

ATLANTIC LINE CONCRETE PAVERS

Our Atlantic Line Concrete Pavers blend functional performance with aesthetic design to create a look that's both attractive and practical. Suitable for use in a diverse range of applications and design needs, these pavers offer many advantages:

- a **high-strength paver** created with only the finest materials that can last for the long haul
- produced with commercial spaces in mind, able to **withstand heavy loads** and **handle the effects of harsh weather**, sun exposure and water
- ideal for **light pedestrian to heavy traffic applications**
- are recommended for elevated pedestals and on basework for **Antique and Wenge Matte Finishes** and are only suitable for installation over basework or as ballast for **other Ornamental Matte Finishes** (5,000 psi)
- available in an **array of colors** ranging from earthy to vibrant that aim to mimic natural materials
- system provides a **uniform and even spacing** and can accommodate custom designs to fit special paving patterns



- Compatible with wind uplift accessory for up to 165 mph wind speed



- Special order product



- Full Pallet
- Full Load



- 12/24 - 40 Pavers per Pallet (80 ft²)
- 24/24 - 20 Pavers per Pallet (80 ft²)
- 36/24 - 20 Pavers per Pallet (120 ft²)
- 22 Pallets per Load



LEED Credits available for:

- Sustainable Sites (SS)
- Materials & Resources (MR)

TECHNICAL DATA

Paver Dimensions (L x W x H):

- ACP-12/24** 12" x 24" x 2"
- ACP-24/24** 24" x 24" x 2"
- ACP-36/24** 36" x 24" x 2" (Antique Only)

*Additional sizes and thicknesses available

Paver Weight:

- 24.5 lbs. / ft² - Antique & Wenge Matte
- 22.5 lbs. / ft² - All other Matte Finishes

Compressive Strength:

- 8,500 lbs. / in² - Antique & Wenge Matte
- 5,000 lbs. / in² - All other Matte Finishes

Water Absorption (ASTM C 140):

- < 5% - Antique & Wenge Matte
- < 7% - All other Matte Finishes

Freeze-Thaw Durability (ASTM C 1262):

- < 1.0%

Coefficient of Friction (ASTM C 1028-89):

- 0.70 - 0.74 (wet)
- 0.80 - 0.84 (dry)

Stain Resistance (ISO 10545-14):

- Class 5

Fire Rating:

- Class A

Building Strength & Breaking Load:

- Class 14

Abrasion Resistance (ASTM C 418):

- 9.5 cm³ / cm²
- 50%

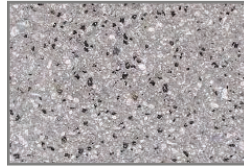
ANTIQUÉ FINISH



AVALANCHE



URBAN CHIC



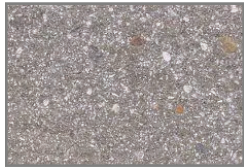
MISTY DUSK



SLATE FUSION



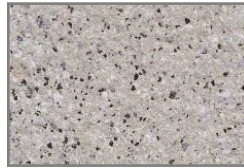
CORAL ESSENCE



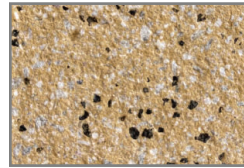
SMOKEY ASH



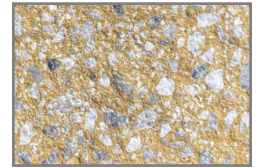
PALE TAUPE



HEATHERED GREY



POTTERS CLAY



MUESLI



VANILLA STONE



TERRACOTTA SLATE



RODEO DUST



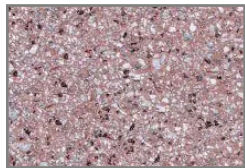
FRENCH BEIGE



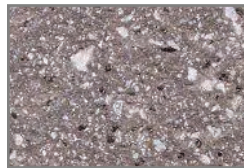
ROSY FINCH



OLD COPPER



SPICE MIX



IRISH COFFEE



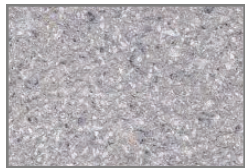
PALE OYSTER



FENA



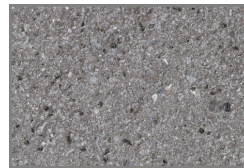
SOYBEAN



FLINT



EMBERSTONE



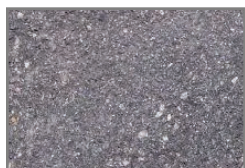
HEMLOCK



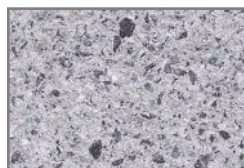
LIGHT SMOKE



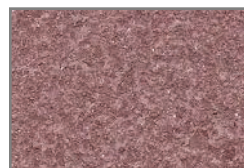
NOIRGRIT



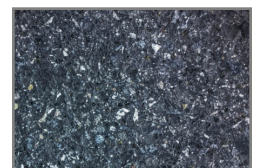
GRAVEL



DORADO

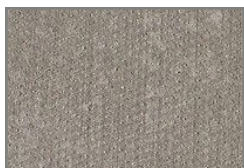


WINE

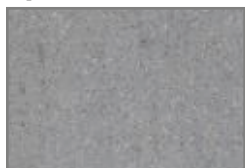


BALTIC SEA

MATTE FINISH (ORNAMENTAL BALLAST PAVER)



WENGE



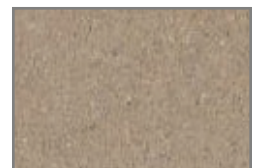
LAPAPILLONNE



SUNSET



CALIGINOUS



ECRU