



9" SEMI-INTENSIVE EDGE ELEMENT

Our 9" Semi-Intensive Edge Element is designed as a definite boundary between gravel / paver and growth media that allows the flow of water but not of the substrate. Specific to this product, it:

- partners with our 1.6" Drainage/Retention Board; the **edging slots align directly with the height of the board** to ensure an unrestricted flow of excess stormwater
- utilizes a **"smooth slide" design** to make secure, invisible connections
- has **pre-fabricated inside and outside corners** for ease of installation
- **prevents overly moist media conditions** around the perimeter or in transition areas of the roof thus preventing anaerobic growing conditions



 • Special order product

 • 10 Lengths & Clips
• Full Pallet

 • 10 Lengths & Clips (80')
• 100 Lengths & Clips per Pallet (800')

TECHNICAL DATA

System Type:

- Monolithic / Contiguous / Modular

Materials:

- 5052-H32 Aluminum

Material Thickness:

- 12 GA

Material Finish:

- Mill (natural aluminum)

Roof / Deck Slope Constraint:

- Up to 5° slope or 1:12 roof pitch

Water Permeability:

- Dependent on drainage/retention board chosen

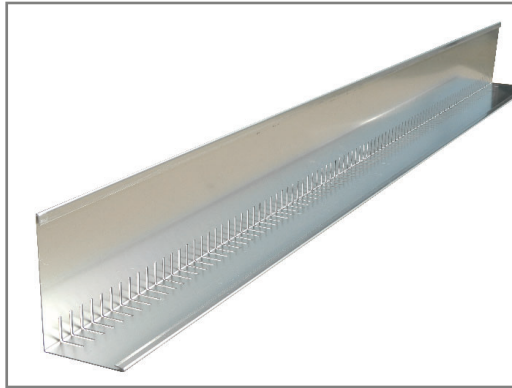
Vegetated Roofing Use:

- Semi-Intensive vegetated roofs

Installation Requirements:

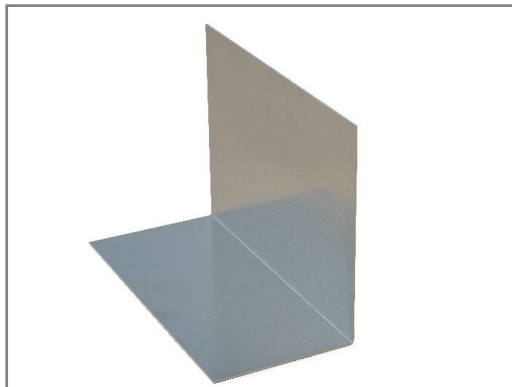
- Lay edge profile sections end to end on top of protective fleece, with foot of restraint toward vegetative portion of roof
- Slide Male Clips into Female Lengths
- Connect all components as shown on edging plan

Product # **1244**

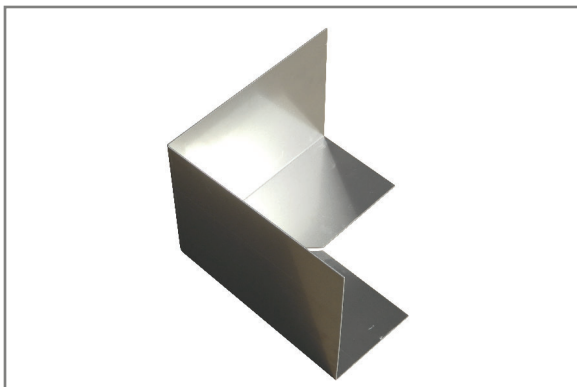


Female Length [1244-EDG-09F]
Dimensions (H x W x L): 9" x 6" x 96"
Weight: 1.58 lbs. / LF

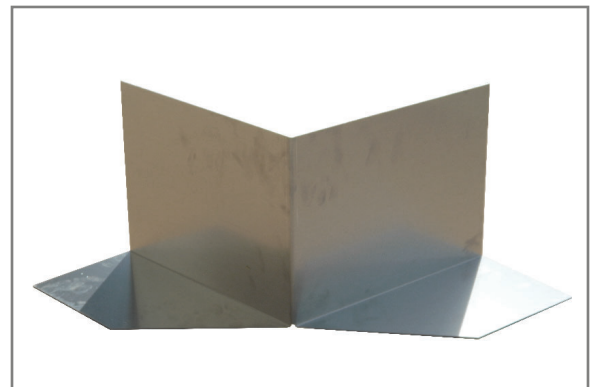
* Un-slotted Female Profile also available



Male Clip [1244-EDG-09M]
Dimensions (H x W x L): 8.675" x 5.675" x 12"
Weight: 1.33 lbs. / LF



Male 90° Corner [1244-EDG-90]
Dimensions (H x W x L): 8.675" x 5.675" x 12" (each side)
Weight: 1.33 lbs. / LF




Male 270° Corner [1244-EDG-270]
Dimensions (H x W x L): 8.675" x 5.675" x 12" (each side)
Weight: 1.33 lbs. / LF


12" SEMI-INTENSIVE EDGE ELEMENT

Our 12" Semi-Intensive Edge Element is designed as a definite boundary between gravel / paver and growth media that allows the flow of water but not of the substrate. Specific to this product, it:

- partners with our Drainage/Retention Boards; the **edging slots align directly with the height of the board** to ensure an unrestricted flow of excess stormwater
- utilizes a **"smooth slide" design** to make secure, invisible connections
- has **pre-fabricated inside and outside corners** for ease of installation
- **prevents overly moist media conditions** around the perimeter or in transition areas of the roof thus preventing anaerobic growing conditions



 • Special order product

 • 10 Lengths & Clips
• Full Pallet

 • 10 Lengths & Clips (80')
• 80 Lengths & Clips per Pallet (640')

TECHNICAL DATA

System Type:

- Monolithic / Contiguous / Modular

Materials:

- 5052-H32 Aluminum

Material Thickness:

- 10 GA

Material Finish:

- Mill (natural aluminum)

Roof / Deck Slope Constraint:

- Up to 5° slope or 1:12 roof pitch

Water Permeability:

- Dependent on drainage/retention board chosen

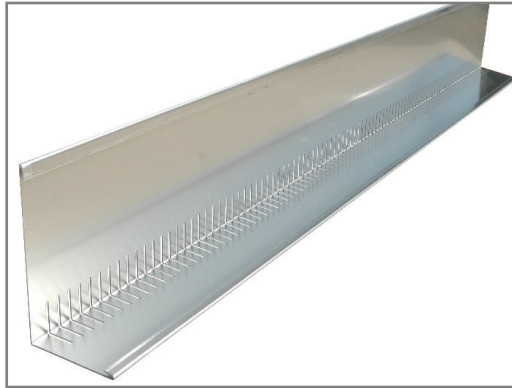
Vegetated Roofing Use:

- Semi-Intensive vegetated roofs

Installation Requirements:

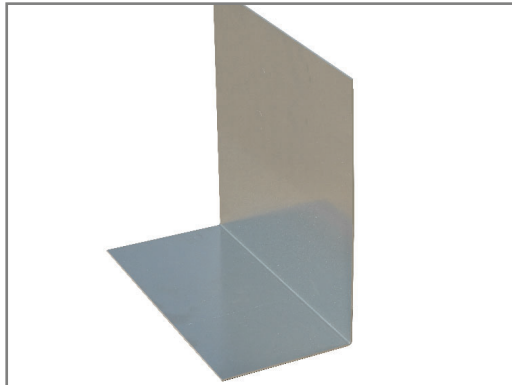
- Lay edge profile sections end to end on top of protective fleece, with foot of restraint toward vegetative portion of roof
- Slide Male Clips into Female Lengths
- Connect all components as shown on edging plan

Product # **1245**

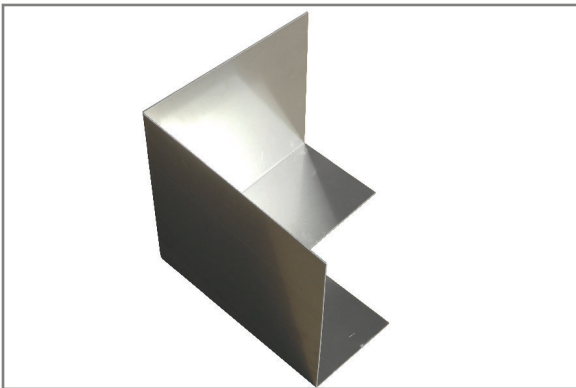


Female Length [1245-EDG-12F]
Dimensions (H x W x L): 12" x 6" x 96"
Weight: 1.86 lbs. / LF

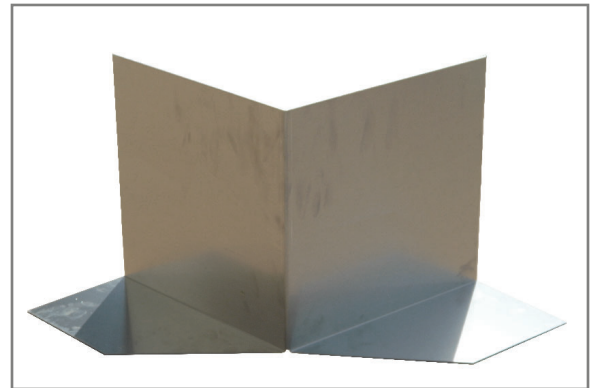
* Un-slotted Female Profile also available



Male Clip [1245-EDG-12M]
Dimensions (H x W x L): 11.675" x 5.675" x 12"
Weight: 1.61 lbs. / LF



Male 90° Corner [1245-EDG-90]
Dimensions (H x W x L): 11.675" x 5.675" x 12" (each side)
Weight: 1.61 lbs. / LF



Male 270° Corner 1245-EDG-270]
Dimensions (H x W x L): 11.675" x 5.675" x 12" (each side)
Weight: 1.61 lbs. / LF