

3" EXTENSIVE EDGE ELEMENT

Our 3" Extensive Edge Element is designed as a definite boundary between gravel / paver and growth media that allows the flow of water but not of the substrate. Specific to this product, it:

- utilizes a "smooth slide" design to make secure, invisible connections
- has pre-fabricated corners for ease of installation
- prevents overly moist media conditions around the perimeter or in transition areas of the roof thus preventing anaerobic growing conditions



Edge Trim ZP 80 A by
OPTIGRÜN
ROOF GREENING

- Individual Length & Clip
 - Full Section
 - Full Pallet
- 8'-2" per Length & Clip
 - 50 Lengths & Clips per Section (408'-4")
 - 4 Sections per Pallet (1,633'-4")

TECHNICAL DATA

System Type:

- Monolithic / Contiguous / Modular

Materials:

- Aluminum

Material Thickness:

- 18 GA

Material Finish:

- Mill (natural aluminum)

Roof / Deck Slope Constraint:

- Up to 5° slope or 1:12 roof pitch

Water Permeability:

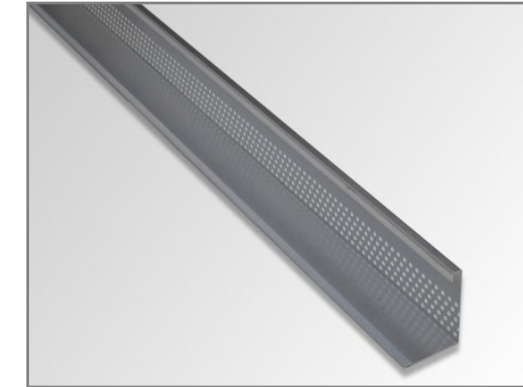
- Dependent on drainage/retention board chosen

Vegetated Roofing Use:

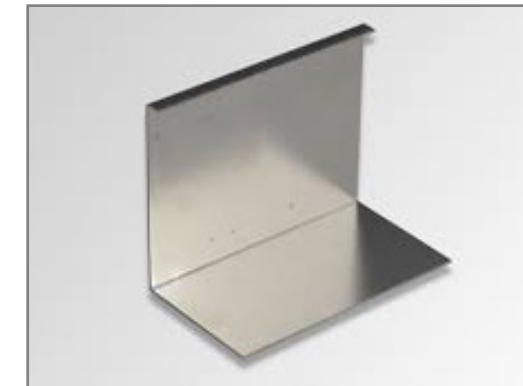
- Extensive vegetated roofs

Installation Requirements:

- Lay edge profile sections end to end on top of protective fleece, with foot of restraint toward vegetative portion of roof
- Slide Male Clips into Female Lengths
- Connect all components as shown on edging plan



Female Length [441-EDG-03OF]
Dimensions (H x W x L): 3" x 3 1/2" x 8'-2"
Weight: 0.54 lbs. / LF



Male Clip [441-EDG-03OM]
Dimensions (H x W x L): 2 3/4" x 3 1/4" x 5"



Corner [441-EDG-0390]
Dimensions (H x W x L): 3" x 3 1/2" x 7 7/8" (each side)