

CLASSIC LINE CONCRETE PAVERS

Our Classic Line Concrete Pavers are inherently strong and offer superior performance. Suitable for use in a diverse range of applications and design needs, these pavers offer many advantages:

- manufactured using **face-mix technology**, the upper portion of each paver features a permanent blend of vibrant color pigments and high strength surface materials
- **non-fading colors** and **natural beauty** that will stand the test of time, thanks to its unique manufacturing process
- ideal for **light pedestrian to heavy traffic applications**
- **aesthetically appealing**, the pavers are available in a wide range of standard colors as well as custom varieties available upon request



LEED Credits available for:

- Sustainable Sites (SS)
- Materials & Resources (MR)



- Full Pallet
- Full Load



- 23 Pavers per Pallet (92 ft²)
- 20 Pallets per Load (1,840 ft²)

TECHNICAL DATA

Paver Dimensions (L x W x H):
CCP-24/24 23 13/16" x 23 13/16" x 2"

Paver Weight:
• 24 lbs. / ft²

Compressive Strength:
• > 8,000 lbs. / in²

Water Absorption (ASTM C 140):
• < 5%

Freeze-Thaw Durability (ASTM C 1262):
• < 1.0%

Coefficient of Friction (ASTM C 1028-89):
• 0.70 - 0.74 (wet)
• 0.80 - 0.84 (dry)

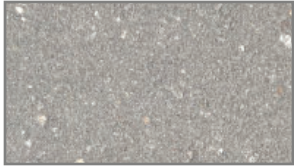
Stain Resistance (ISO 10545-14):
• Class 5

Fire Rating:
• Class A

Building Strength & Breaking Load:
• Class 14

Abrasion Resistance (ASTM C 418):
• 9.5 cm³ / cm²
• 50%

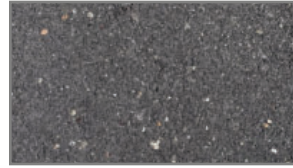
SOLID COLORS



VENTUS



KILWIN



MORAVIA



OCLUS



VIVE

BLENDED COLORS



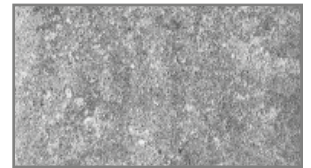
PRESCOTT



TRAVERTINE



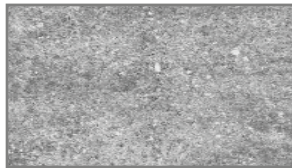
TRINITY



ERGO



EGLANTINE



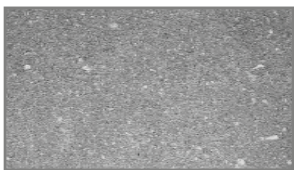
ROYAL



ROMA

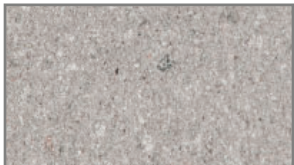


CALICHE



FOLSOM

BALLAST PAVER (NOT FOR PEDESTAL APPLICATIONS)



SMOKE