

SPIRALJACK ADJUSTABLE PEDESTALS & COMPONENTS

Although there are many options for elevated pedestal systems, SpiralJack offers the only universal pedestal system. The versatility of the pedestal head meets any elevated deck need. From our wind uplift capabilities to our ability to meet endless geometric patterns, contractors can use a single solution that increases productivity and minimizes inventory through this universal design.

SpiralJack provides over 40" of varying heights for its elevated pedestal assemblies. The versatility of our universal pedestal head accepts accessories for concrete pavers, wood & porcelain tiles as well as synthetic turf systems. When designing or installing exceptional exterior living spaces, use SpiralJack for its performance and its flexibility.



SpiralJack Elevated Pedestal system:

- has a **height range from 5/64" - 42 5/8"** for use with concrete pavers, wood, porcelain or stone tiles, and synthetic turf systems
- features **slope correction up to 4%**
- provides a **variety of spacing sizes**, allowing multiple surfaces to accurately line up
- provides **flexibility**; all components and accessories are easily inserted and secured to the pedestal
- does not penetrate or compromise waterproofing membranes due to its **large flat base** with **rounded edges**



• Full Box



• 20 Boxes per Pallet

TECHNICAL DATA

Materials:

- Recycled Polypropylene resistant to mold, alkali, & bitumen

Base Diameter:

- 7 43/64" (195 mm)

Height Range:

- 5/64" - 42 5/8" (2 mm - 1083 mm)

Slope Correction:

- 0-4%

Spacer Tab Thicknesses:

- 1/8" (3 mm)
- 5/32" (4 mm)
- 13/64" (5 mm)

Compressive Resistance:

- 1,984 lbs. minimum

Standard Kit:

- Pedestal Base
- Pedestal Top
- **PPC-TSP** Spacer Tab
- **PPC-SHM-2** Neoprene Shims

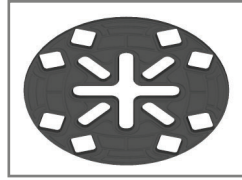
Additional Components & Accessories:

- **PPC-EXT** Adjustable Height Extender
- **PPC-BSC** Bottom Slope Corrector
- **PPC-BCL** Bearer Holder
- **PPC-WUA-B** Basic Wind Uplift Assembly
- **PPC-WUA-C** Concealed Wind Uplift Assembly

Product # 311/312



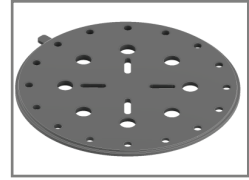
312-PPC-TSP
Spacer
Tab



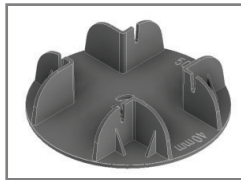
312-PPC-SHM-2
Neoprene
Shims



312-PPC-EXT
Adjustable Height
Extender



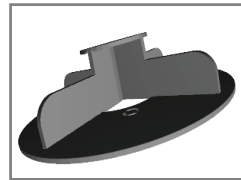
312-PPC-BSC
Bottom Slope
Corrector



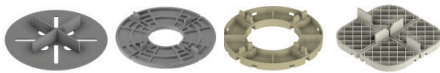
312-PPC-BCL
Bearer
Holder



312-PPC-WUA-B
Basic Wind Uplift
Assembly



312-PPC-WUA-C
Concealed Wind Uplift
Assembly



311-
PPE-2 311-
PPE-7 311-
PPE-13 311-
PPE-16

5/64" 1/4" 1/2" 5/8"
2 mm 7 mm 13 mm 16 mm

* Spacer tabs are integral for all pedestals 5/8" or less in height.
* 312 Accessories, other than 312-PPC-SHM-2, do not work with pedestals 5/8" or less in height.



311-
PPE-19 311-
PPE-28 311-
PPE-36 311-
PPE-52 311-
PPE-83 311-
PPE-133 311-
PPE-189 311-
PPE-260 311-
PPE-364 311-
PPE-471 311-
PPE-576 311-
PPE-682 311-
PPE-786

3/4"-1" 1"-1 1/2" 1 1/2"-2" 2"-3 1/4" 3 1/4"-5 1/4" 5 1/4"-8 7/8" 7 1/2"-11 1/2" 10 1/4"-14 3/8" 14 3/8"-20" 18 1/2"-25 5/8" 22 5/8"-31 1/4" 26 7/8"-37" 31"-42 5/8"

19-25 mm 28-36 mm 36-51 mm 52-82 mm 83-135 mm 133-225 mm 189-293 mm 260-365 mm 364-507 mm 471-651 mm 576-795 mm 682-939 mm 786-1083 mm

* Dimensions in inches are nominal. Metric dimensions are actual.
* Slope correction necessary for roof pitches greater than 1/4" per foot