

BLU-TERRACE

System 300: Amenity Deck Applications



SUSTAINABLU

ON STRUCTURE STORMWATER MANAGEMENT SYSTEMS



TABLE OF CONTENTS

System Assemblies

Blu-Terrace - Conventional Assemblies

Blu-Terrace - Inverted Assemblies

Product Data Sheets

SpiralJack Adjustable Pedestals & Components

[311-PPE / 312-PPC](#)

Classic Line Concrete Pavers

[313-CCP](#)

Flex Line Concrete Pavers

[314-FCP](#)

Atlantic Line Concrete Pavers

[315-ACP](#)

Classic Wood Deck Tiles

[316-WDT](#)

Custom Wood Deck Tiles

[317-WDT](#)

Porcelain Deck Tiles

[318-PDT](#)

Semi-Intensive Protective Fleece - 15 oz

[1222-PFC-500](#)

Pedestrian Paving Drainage Mat

[433-DRM-10J](#)

Specifications

[07 76 00] 300-Series Blu-Terrace Roof Paver and/or Tile on Pedestal System CSI Specification

Installation Guides

[311-312] SpiralJack Pedestals - Installation Guide

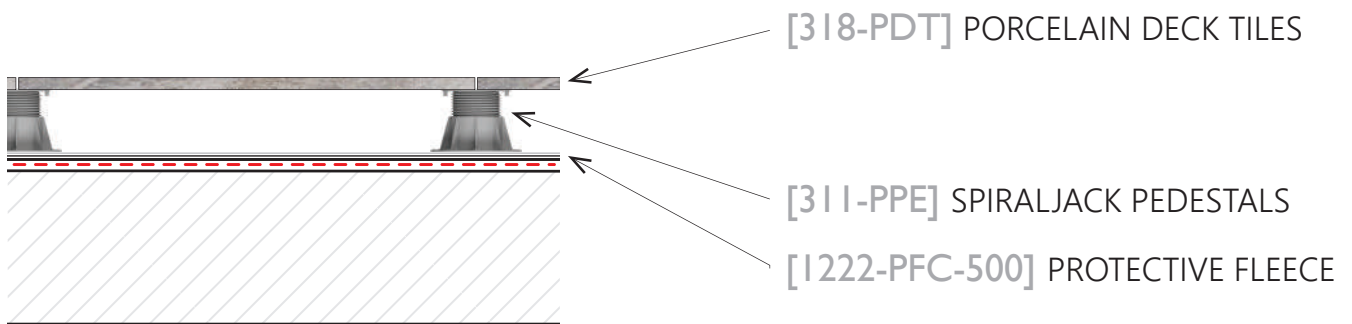
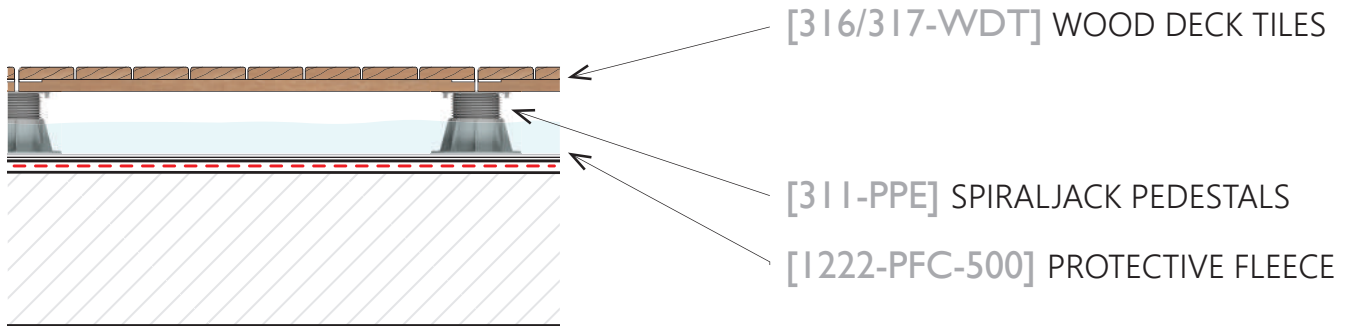
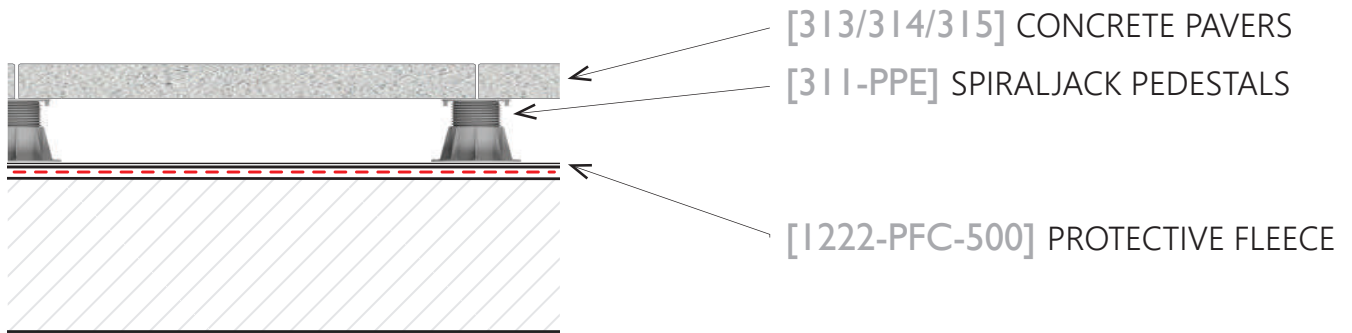
Operations & Maintenance (O&M)

Blu-Terrace Maintenance Guidelines

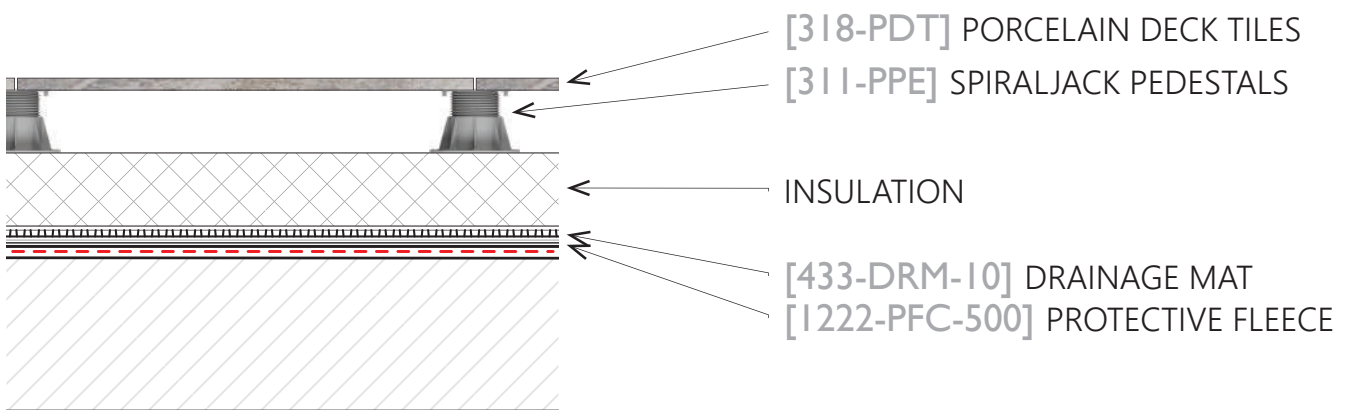
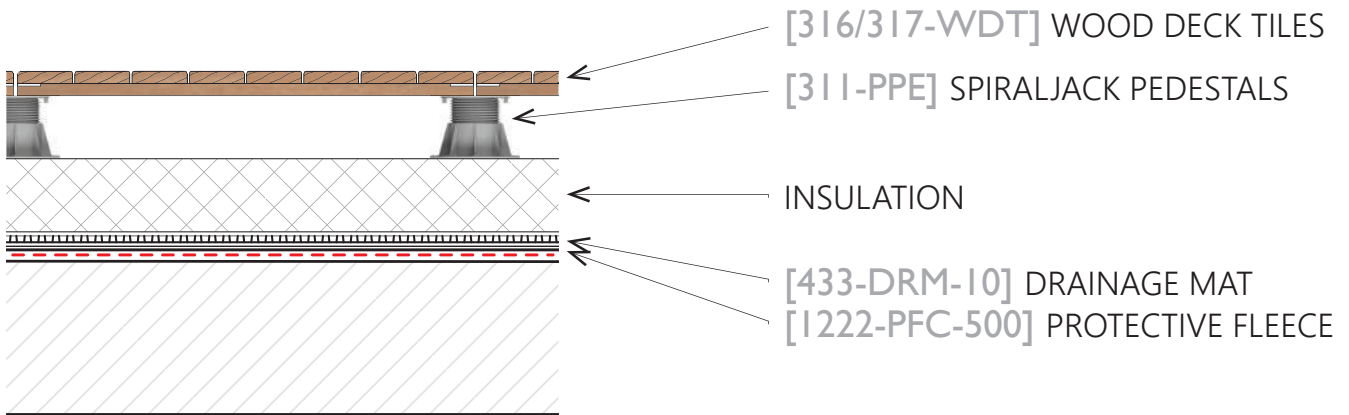
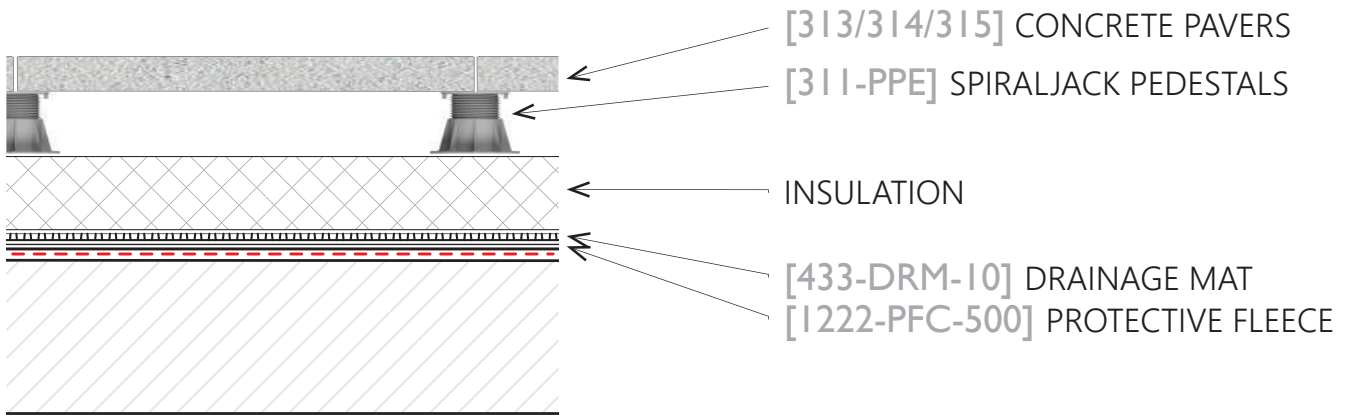
Warranty

Blu-Terrace Materials Limited Warranty

BLU-TERRACE - CONVENTIONAL ASSEMBLIES



BLU-TERRACE - INVERTED ASSEMBLIES



SPIRALJACK ADJUSTABLE PEDESTALS & COMPONENTS

Although there are many options for elevated pedestal systems, SpiralJack offers the only universal pedestal system. The versatility of the pedestal head meets any elevated deck need. From our wind uplift capabilities to our ability to meet endless geometric patterns, contractors can use a single solution that increases productivity and minimizes inventory through this universal design.

SpiralJack provides over 40" of varying heights for its elevated pedestal assemblies. The versatility of our universal pedestal head accepts accessories for concrete pavers, wood & porcelain tiles as well as synthetic turf systems. When designing or installing exceptional exterior living spaces, use SpiralJack for its performance and its flexibility.



SpiralJack Elevated Pedestal system:

- has a **height range from 5/64" - 42 5/8"** for use with concrete pavers, wood, porcelain or stone tiles, and synthetic turf systems
- features **slope correction up to 4%**
- provides a **variety of spacing sizes**, allowing multiple surfaces to accurately line up
- provides **flexibility**; all components and accessories are easily inserted and secured to the pedestal
- does not penetrate or compromise waterproofing membranes due to its **large flat base** with **rounded edges**



• Full Box



• 20 Boxes per Pallet

TECHNICAL DATA

Materials:

- Recycled Polypropylene resistant to mold, alkali, & bitumen

Base Diameter:

- 7 43/64" (195 mm)

Height Range:

- 5/64" - 42 5/8" (2 mm - 1083 mm)

Slope Correction:

- 0-4%

Spacer Tab Thicknesses:

- 1/8" (3 mm)
- 5/32" (4 mm)
- 13/64" (5 mm)

Compressive Resistance:

- 1,984 lbs. minimum

Standard Kit:

- Pedestal Base
- Pedestal Top
- **PPC-TSP** Spacer Tab
- **PPC-SHM-2** Neoprene Shims

Additional Components & Accessories:

- **PPC-EXT** Adjustable Height Extender
- **PPC-BSC** Bottom Slope Corrector
- **PPC-BCL** Bearer Holder
- **PPC-WUA-B** Basic Wind Uplift Assembly
- **PPC-WUA-C** Concealed Wind Uplift Assembly

Product # 311/312



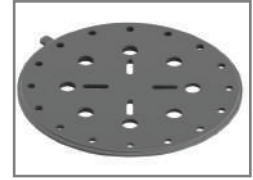
312-PPC-TSP
Spacer
Tab



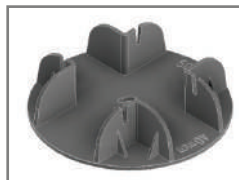
312-PPC-SHM-2
Neoprene
Shims



312-PPC-EXT
Adjustable Height
Extender



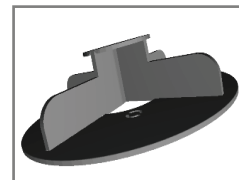
312-PPC-BSC
Bottom Slope
Corrector



312-PPC-BCL
Bearer
Holder



312-PPC-WUA-B
Basic Wind Uplift
Assembly



312-PPC-WUA-C
Concealed Wind Uplift
Assembly



311-
PPE-2 311-
PPE-7 311-
PPE-13 311-
PPE-16

5/64" 1/4" 1/2" 5/8"
2 mm 7 mm 13 mm 16 mm

* Spacer tabs are integral for all pedestals 5/8" or less in height.
* 312 Accessories, other than 312-PPC-SHM-2, do not work with pedestals 5/8" or less in height.



311-
PPE-19 311-
PPE-28 311-
PPE-36 311-
PPE-52 311-
PPE-83 311-
PPE-133 311-
PPE-189 311-
PPE-260 311-
PPE-364 311-
PPE-471 311-
PPE-576 311-
PPE-682 311-
PPE-786

3/4"-1" 1"-1 1/2" 1 1/2"-2" 2"-3 1/4" 3 1/4"-5 1/4" 5 1/4"-8 7/8" 7 1/2"-11 1/2" 10 1/4"-14 3/8" 14 3/8"-20" 18 1/2"-25 5/8" 22 5/8"-31 1/4" 26 7/8"-37" 31"-42 5/8"

19-25 mm 28-36 mm 36-51 mm 52-82 mm 83-135 mm 133-225 mm 189-293 mm 260-365 mm 364-507 mm 471-651 mm 576-795 mm 682-939 mm 786-1083 mm

* Dimensions in inches are nominal. Metric dimensions are actual.
* Slope correction necessary for roof pitches greater than 1/4" per foot

CLASSIC LINE CONCRETE PAVERS

Our Classic Line Concrete Pavers are inherently strong and offer superior performance. Suitable for use in a diverse range of applications and design needs, these pavers offer many advantages:

- manufactured using **face-mix technology**, the upper portion of each paver features a permanent blend of vibrant color pigments and high strength surface materials
- **non-fading colors** and **natural beauty** that will stand the test of time, thanks to its unique manufacturing process
- ideal for **light pedestrian to heavy traffic applications**
- **aesthetically appealing**, the pavers are available in a wide range of standard colors as well as custom varieties available upon request



LEED Credits available for:

- Sustainable Sites (SS)
- Materials & Resources (MR)



- Full Pallet
- Full Load



- 23 Pavers per Pallet (92 ft²)
- 20 Pallets per Load (1,840 ft²)

TECHNICAL DATA

Paver Dimensions (L x W x H):
CCP-24/24 23 13/16" x 23 13/16" x 2"

Paver Weight:
• 24 lbs. / ft²

Compressive Strength:
• > 8,000 lbs. / in²

Water Absorption (ASTM C 140):
• < 5%

Freeze-Thaw Durability (ASTM C 1262):
• < 1.0%

Coefficient of Friction (ASTM C 1028-89):
• 0.70 - 0.74 (wet)
• 0.80 - 0.84 (dry)

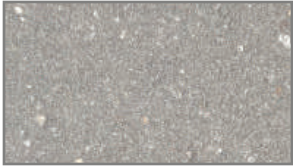
Stain Resistance (ISO 10545-14):
• Class 5

Fire Rating:
• Class A

Building Strength & Breaking Load:
• Class 14

Abrasion Resistance (ASTM C 418):
• 9.5 cm³ / cm²
• 50%

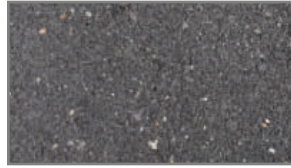
SOLID COLORS



VENTUS



KILWIN



MORAVIA



OCLUS



VIVE

BLENDED COLORS



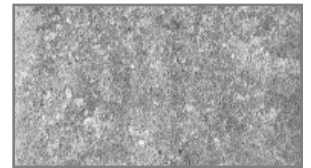
PRESCOTT



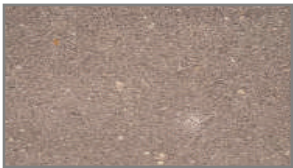
TRAVERTINE



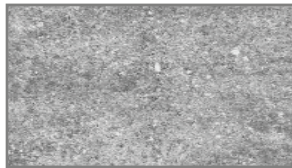
TRINITY



ERGO



EGLANTINE



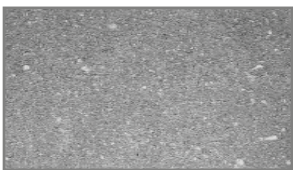
ROYAL



ROMA

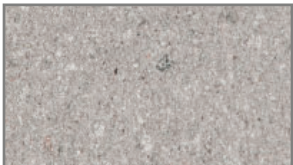


CALICHE



FOLSOM

BALLAST PAVER (NOT FOR PEDESTAL APPLICATIONS)



SMOKE

FLEX LINE CONCRETE PAVERS

Our Flex Line Concrete Pavers are hydraulically pressed to superior European standards. Suitable for use in a diverse range of applications and design needs, these pavers offer many advantages:

- **high compressive strength** and durability comparable to stone, thanks to its unique manufacturing process
- stylish and strong, these pavers are **superior to conventional concrete pavers** in appearance and performance
- ideal for **heavy traffic applications**
- available in a **wide variety of paver sizes, colors, designs, and textures** to accent any building, decor, or landscaping
- system provides a **uniform and even spacing** and can accommodate custom designs to fit special paving patterns



• Special order product



• Full Pallet
• Full Load



• 12/24 - 44 Pavers per Pallet (88 ft²)
• 24/24 - 22 Pavers per Pallet (88 ft²)
• 36/24 - 22 Pavers per Pallet (132 ft²)
• 48/24 - 13 Pavers per Pallet (104 ft²)
• 22 Pallets per Load



LEED Credits available for:

- Sustainable Sites (SS)
- Materials & Resources (MR)

TECHNICAL DATA

Paver Dimensions (L x W x H):

- FCP-SC-12/24** 11 3/4" x 23 1/2" x 2"
FCP-SC-24/24 23 7/8" x 23 7/8" x 2"
FCP-SC-36/24 35 7/8" x 23 7/8" x 2"
FCP-SC-48/24 47 7/8" x 23 7/8" x 2 1/2"

*Additional sizes and thicknesses available

Paver Weight:

- 2" Thickness = 24 lbs. / ft²
- 2 1/2" Thickness = 30 lbs. / ft²

Compressive Strength:

- 9,705 - 11,385 lbs. / in²

Water Absorption (ASTM C 140):

- 3.5 - 3.6%

Freeze-Thaw Durability (ASTM C 67):

- 0.8 - 1.0%

Coefficient of Friction (ASTM C 1028-89):

- 0.70 - 0.74 (wet)
- 0.80 - 0.84 (dry)

Stain Resistance (ISO 10545-14):

- Class 5

Fire Rating:

- Class A

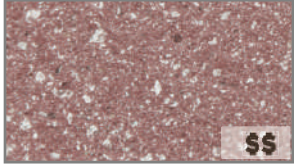
Building Strength & Breaking Load:

- Class 14

Abrasion Resistance (ASTM C 418):

- 9.5 cm³ / cm²
- 50%

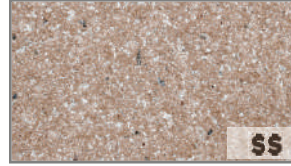
QUARRY STONE FINISH



BRICK RED



CARIBBEAN GOLD



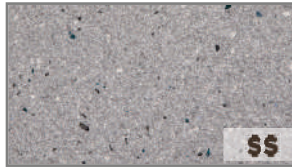
BLEACHED CORAL



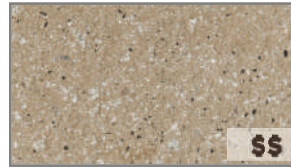
CHESTNUT BRICK



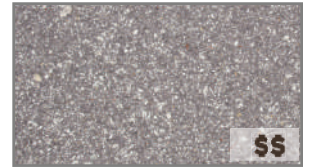
GREY STONE



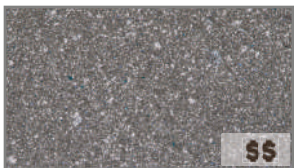
SANDY DUNE



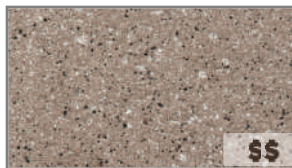
CALIFORNIA GOLD



MERLOT



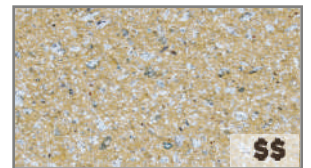
SILVERSTONE



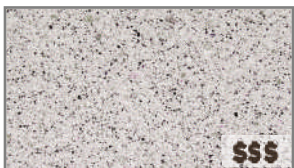
DESERT TAN



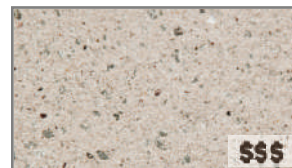
GRIS



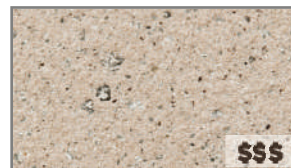
TUSCAN



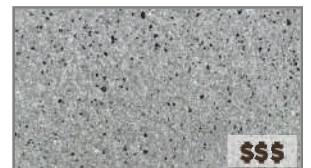
PEARL



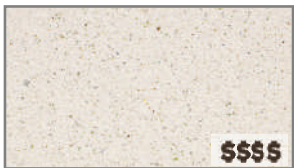
PAPER WHITE



NATURAL TAN



SHIRE



ARCTIC WHITE

OTHER TEXTURES



DIAMOND

ATLANTIC LINE CONCRETE PAVERS

Our Atlantic Line Concrete Pavers blend functional performance with aesthetic design to create a look that's both attractive and practical. Suitable for use in a diverse range of applications and design needs, these pavers offer many advantages:

- a **high-strength paver** created with only the finest materials that can last for the long haul
- produced with commercial spaces in mind, able to **withstand heavy loads** and **handle the effects of harsh weather**, sun exposure and water
- ideal for **light pedestrian to heavy traffic applications**
- are recommended for elevated pedestals and on basework for **Antique and Wenge Matte Finishes** and are only suitable for installation over basework or as ballast for **other Ornamental Matte Finishes** (5,000 psi)
- available in an **array of colors** ranging from earthy to vibrant that aim to mimic natural materials
- system provides a **uniform and even spacing** and can accommodate custom designs to fit special paving patterns



LEED Credits available for:

- Sustainable Sites (SS)
- Materials & Resources (MR)



• Special order product



• Full Pallet
• Full Load



- 12/24 - 40 Pavers per Pallet (80 ft²)
- 24/24 - 20 Pavers per Pallet (80 ft²)
- 36/24 - 20 Pavers per Pallet (120 ft²)
- 22 Pallets per Load

TECHNICAL DATA

Paver Dimensions (L x W x H):

- ACP-12/24** 12" x 24" x 2"
- ACP-24/24** 24" x 24" x 2"
- ACP-36/24** 36" x 24" x 2" (Antique Only)

*Additional sizes and thicknesses available

Paver Weight:

- 24.5 lbs. / ft² - Antique & Wenge Matte
- 22.5 lbs. / ft² - All other Matte Finishes

Compressive Strength:

- 8,500 lbs. / in² - Antique & Wenge Matte
- 5,000 lbs. / in² - All other Matte Finishes

Water Absorption (ASTM C 140):

- < 5% - Antique & Wenge Matte
- < 7% - All other Matte Finishes

Freeze-Thaw Durability (ASTM C 1262):

- < 1.0%

Coefficient of Friction (ASTM C 1028-89):

- 0.70 - 0.74 (wet)
- 0.80 - 0.84 (dry)

Stain Resistance (ISO 10545-14):

- Class 5

Fire Rating:

- Class A

Building Strength & Breaking Load:

- Class 14

Abrasion Resistance (ASTM C 418):

- 9.5 cm³ / cm²
- 50%

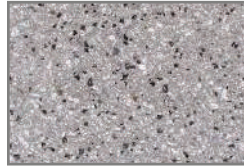
ANTIQUE FINISH



AVALANCHE



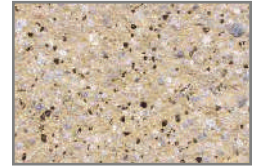
URBAN CHIC



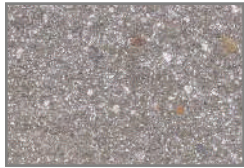
MISTY DUSK



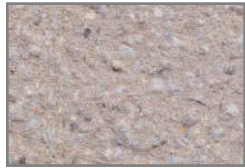
SLATE FUSION



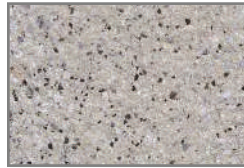
CORAL ESSENCE



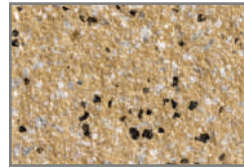
SMOKEY ASH



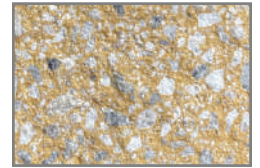
PALE TAUPE



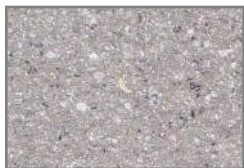
HEATHERED GREY



POTTERS CLAY



MUESLI



VANILLA STONE



TERRACOTTA SLATE



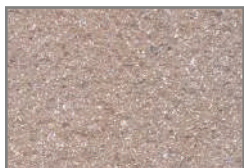
RODEO DUST



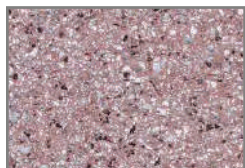
FRENCH BEIGE



ROSY FINCH



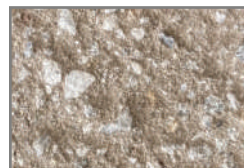
OLD COPPER



SPICE MIX



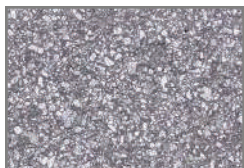
IRISH COFFEE



PALE OYSTER



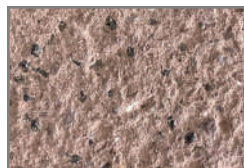
FENA



SOYBEAN



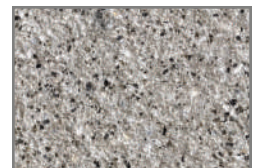
FLINT



EMBERSTONE



HEMLOCK



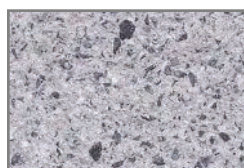
LIGHT SMOKE



NOIRGRIT



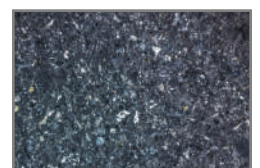
GRAVEL



DORADO

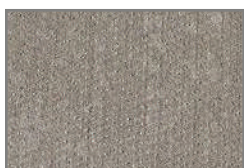


WINE



BALTIC SEA

MATTE FINISH (ORNAMENTAL BALLAST PAVER)



WENGE



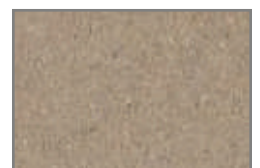
LAPAPILLONNE



SUNSET



CALIGINOUS



ECRU

CLASSIC WOOD DECK TILES

Our Wood Deck Tiles can be used for most commercial or residential applications including rooftop decks, elevated terraces, plazas, and other large exterior spaces. Our Wood Deck Tiles:

- are **structural decking tiles** which are prefabricated panels of 13/16" slats screwed into three solid wood support battens with stainless screws
- have exceptional **strength, durability, and resistance** to flexing
- are used with adjustable height pedestals for construction of elevated decks on rooftops and over sloping or uneven surfaces
- can be laid over existing concrete using fixed height spacers (1/2" - 1") to lift the tiles off the surface and ensure **sufficient drainage**
- have slots cut in the corner of each tile which enables the Lock Down Tab to be inserted, ensuring a **safe, secure and level surface**



• Special order product



• Full Pallet
• Full Load



• 320 ft² per Pallet
• 26 Pallets per Load (8,320 ft²)

TECHNICAL DATA

Paver Dimensions (L x W x H):

WDT-SPECIES-24/24 24" x 24" x 1 1/2"

WDT-SPECIES-48/24 48" x 24" x 1 1/2"

Paver Weight:

- 4 lbs. / ft²

Janka Hardness:

- 1,798 lbs. (Classic-Light)
- 2,100 lbs. (Classic-Dark)

Modulus of Elasticity:

- 2,900,000 lbs. / in² (Classic-Light)
- 2,560,000 lbs. / in² (Classic-Dark)

Modulus of Rupture:

- 20,950 lbs. / in² (Classic-Light)
- 18,400 lbs. / in² (Classic-Dark)

Density @ 12% Moisture:

- 930 KG / m³ (Classic-Light)
- 850 KG / m³ (Classic-Dark)

Resistance to Decay & Insect Attack:

- Decay, fungi, & termites

*Not resistant to marine borers

Freeze-Thaw Durability:

- Class A

Fire Rating:

- Class A

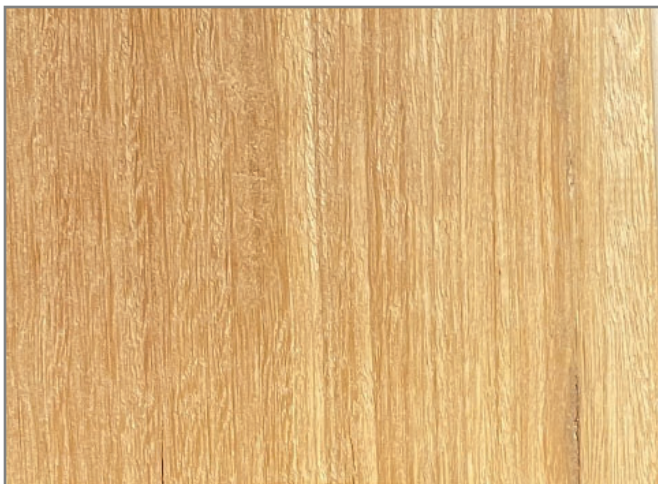
Shrinkage:

- 8.8% tangential
- 6.3% radial

Wood Deck Tiles come in two standard sizes: **24" x 24" squares and 48" x 24" rectangles**. Each wood option below can be ordered in either size to suit your decking needs and design aesthetic.



24" x 24" WOOD DECK TILE



CLASSIC - LIGHT [CLL]



CLASSIC - DARK [CLD]

CUSTOM WOOD DECK TILES

Our Wood Deck Tiles can be used for most commercial or residential applications including rooftop decks, elevated terraces, plazas, and other large exterior spaces. Our Wood Deck Tiles:

- are **structural decking tiles** which are prefabricated panels of 13/16" slats screwed into three solid wood support battens with stainless screws
- have exceptional **strength, durability, and resistance** to flexing
- are used with adjustable height pedestals for construction of elevated decks on rooftops and over sloping or uneven surfaces
- can be laid over existing concrete using fixed height spacers (1/2" - 1") to lift the tiles off the surface and ensure **sufficient drainage**
- have slots cut in the corner of each tile which enables the Lock Down Tab to be inserted, ensuring a **safe, secure and level surface**



• FSC Certified Wood



• Special order product



• Full Pallet
• Full Load



• 400 ft² per Pallet
• 26 Pallets per Load (10,400 ft²)



LEED Credits available for:

- Sustainable Sites (SS)
- Materials & Resources (MR)

TECHNICAL DATA

Paver Dimensions (L x W x H):

WDT-SPECIES-24/24 23 7/8" x 23 7/8" x 1 1/2"

WDT-SPECIES-48/24 47 3/8" x 23 7/8" x 1 1/2"

Paver Weight:

- 6 lbs. / ft²

Compressive Strength:

- 13,633 lbs. / in²

Modulus of Elasticity:

- 3,045,792 lbs. / in²

Modulus of Rupture:

- 24,656 lbs. / in²

Density @ 12% Moisture:

- 215-242 lbs. / in²

Resistance to Decay & Insect Attack:

- Decay, fungi, & termites

*Not resistant to marine borers

Freeze-Thaw Durability:

- Class A

Fire Rating:

- Class A

Shrinkage:

- 7% tangential
- 6% radial
- 1.2 tangential/radial shrinkage ratio

Wood Deck Tiles come in two standard sizes: **24" x 24" squares and 48" x 24" rectangles**. Each wood option below can be ordered in either size to suit your decking needs and design aesthetic.



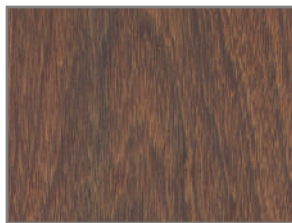
24" x 24" WOOD DECK TILE



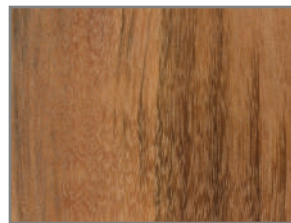
48" x 24" WOOD DECK TILE



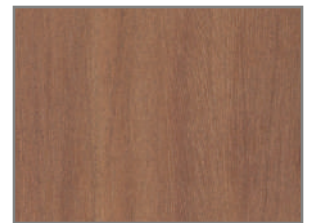
ITAUBA [ITA]



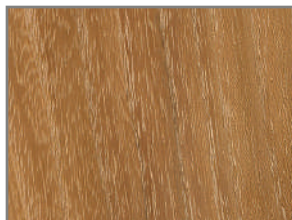
IPE [IPE]



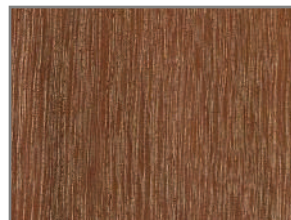
TIGERWOOD [TIG]



CUMARU [CUM]



BLACK LOCUST [BLA]



MASSARANDUBA [MAS]

PORCELAIN DECK TILES

Our Porcelain Deck Tiles are structural decking tiles; ideal for use in public or private environments, these pavers/tiles offer many advantages:

- modular tiles are **removable**, allowing the gap created underneath the floor to be **easily inspected** and can house electric cables and hydraulic pipes
- **frost-resistant**; it buffers thermal expansion of the concrete substrate; the floor will no longer 'crack'
- **less load bearing** on floors and balconies where the layer of concrete slab and adhesive is not required
- slight gap present between adjacent tiles allows for the **proper drainage** of water
- ideal for **medium to heavy traffic**
- simulated **wood and stone finishes** to match any design aesthetic
- **easy to clean**; porcelain deck tiles can be cleaned with standard household cleaners or pressure washed with a low pressure washing device



LEED Credits available for:

- Sustainable Sites (SS)
- Energy & Atmosphere (EA)
- Materials & Resources (MR)



• Special order product



• Full Pallet
• Full Load



- 12/48 - 64 Tiles per Pallet (256 ft²)
- 24/24 - 68 Tiles per Pallet (272 ft²)
- 36/24 - 40 Tiles per Pallet (240 ft²)
- 48/24 - 32 Tiles per Pallet (256 ft²)
- 26 Pallets per Load

TECHNICAL DATA

Tile Dimensions (L x W x H):

PDT-12/48	11 5/8" x 47 5/8" x 3/4"
PDT-24/24	23 5/8" x 23 5/8" x 3/4"
PDT-36/24	35 5/8" x 23 5/8" x 3/4"
PDT-48/24	47 5/8" x 23 5/8" x 3/4"

Tile Weight:

- 9 lbs. / ft²

Concentrated Load (ISO 10545-4):

- 2,594 lbs. (center)

Distributed Load (ISO 10545-4):

- 2,641 lbs.

Water Absorption (ISO 10545-3):

- < 0.38%

Freeze-Thaw Durability (ISO 10545-12):

- Complies with standard

Slip Resistance (ASTM 1028-07):

- > 0.80 (wet)
- > 0.80 (dry)

Impact Resistance (ISO 10545-5):

- > 0.7 coefficient of restitution

Stain Resistance (ISO 10545-14):

- Class 5

Abrasion Resistance (ISO 10545-6):

- Class 4

Fire Rating:

- Class A

WOOD FINISH



ASH

STONE FINISH



QUARZ IVORY



QUARTZ SILVER



QUARTZ GREY



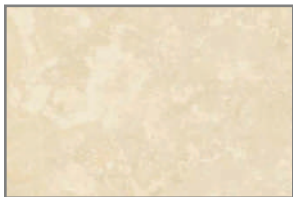
LIMESTONE COFFEE



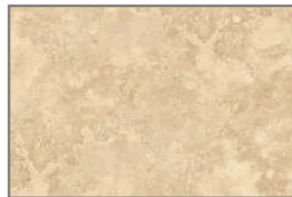
LIMESTONE GREY



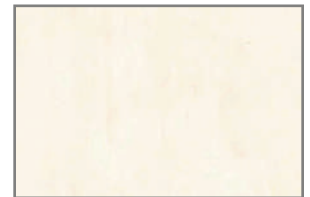
LIMESTONE IVORY



TRAVERTINE IVORY



TRAVERTINE NAVONA

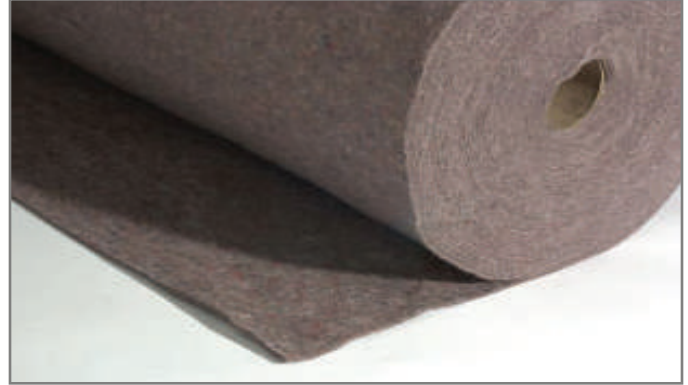


CEMENT IVORY

SEMI-INTENSIVE PROTECTIVE FLEECE - 15 oz

Our Semi-Intensive Protective Fleece is designed specifically for use within Blu-Terrace Amenity Deck systems & Blu-Garden Semi-Intensive systems. Specific to this product, it:

- **protects the roof membrane** and/or root barrier against damage from light mechanical demands
- **separates materials** of incompatible substrates from one another
- **stores water**, increasing water holding capacity
- has a mass/structure and water holding capacity designed with the dead load weight and plant palettes of the Blu-Terrace amenity deck systems in mind to give the perfect **balance of water holding capacity and protection**



Protection and Storage Fleece RMS 500 by



LEED Credits available for:
• Materials & Resources (MR)



- Individual Roll
- Full Pallet



- 1,076 ft² per Roll
- 5 Rolls per Pallet (5,380 ft²)

TECHNICAL DATA

Materials:

- Polypropylene, Polyester & Recycled Acrylic Thread

Material Thickness:

- 0.16", 15 oz.

Roll Dimensions (W x L):

- 6' 6 3/4" x 164' 1/2"

Roll Diameter:

- 1' 7 3/4"

Roll Weight:

- 110 lbs.

Total Saturated Weight:

- 0.81 lbs. / ft²

Water Holding Capacity:

- 0.14 in³ / in² (0.085 gal / ft²)

Rot & Pathogen Resistant:

- Yes

Puncture Resistant:

- Yes

Use:

- Blu-Terrace amenity deck systems
- Blu-Garden semi-intensive systems

Installation Requirements:


- Overlap fabric by 6"


PEDESTRIAN PAVING DRAINAGE MAT


Our Pedestrian Paving Drainage Mat is designed for drainage beneath accessible areas that do not need water storage and on vertical building components. Specific to this product, it:

- is a **composite drainage layer** consisting of a three-dimensional drainage core and a filter fabric
- includes a **filter fabric bonded to the core**, preventing intrusion of the overburden into the drainage channels
- **retains soil or sand particles** as well as freshly placed concrete allowing filtered water to pass through to the drainage core
- is typically used in areas necessitating a **moderate compressive strength material for drainage**, specifically for low load pedestrian accessibility for pavers, concrete or asphalt walkways, and patios



 • Special order product

 • Individual Roll
• Full Pallet

 • 200 ft² per Roll
• 7 Rolls per Pallet (1,400 ft²)



LEED Credits available for:
• Materials & Resources (MR)

TECHNICAL DATA

Materials:

- Recycled HDPE, Polypropylene Thread

Material Thickness:

- 0.40"

Roll Dimensions (W x L):

- 4' x 50'

Roll Weight:

- 39 lbs.

Compressive Strength (ASTM D 1621):

- 15,000 lbs. / ft²

Drainage Core Flow (ASTM D 4716):

- 21 gal / min / ft

Filter Fabric Flow Rate (ASTM D 4491):

- 140 gal / min / ft²

CBR Puncture (ASTM D 6241):

- 250 lbs.

Grab Tensile (ASTM D 4632):

- 100 lbs.

Use:

- Drainage below insulation in inverted assemblies
- Pedestrian compressive strength grade drainage used below pathways or vegetated areas that do not need water storage

Installation Requirements:

- Peel fabric back two dimples and overlap two rows of dimples, snap in place.
- Fold fabric back over joint.
- Cover boards with overburden immediately to protect from UV rays & wind uplift

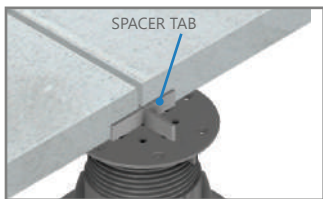
UNDERSTANDING THE SPIRALJACK PEDESTAL

STANDARD FEATURES

- HEIGHT RANGE: 5/64" - 42 5/8"
- THREADED FOR FINE HEIGHT ADJUSTMENTS
- 100% POST-CONSUMER RECYCLED MATERIAL - LEED®
- UNAFFECTED BY MOLD, ALGAE, OR PONDING WATER
- SUPPORTS 1,984 LBS. (8.82 kN) (MINIMUM LOAD CAPACITY)

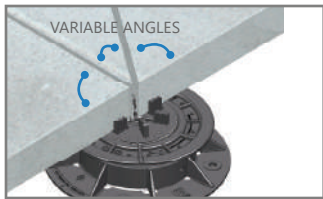
OPTIONAL FEATURES

- SLOPE CORRECTION ADJUSTMENT AVAILABLE
- CUSTOM COMPONENTS AVAILABLE
- WIND UP-LIFT COMPONENTS FOR HIGH WIND CONDITIONS



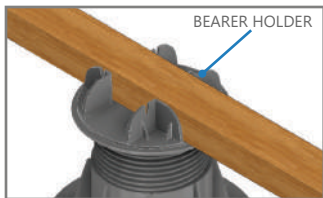
SPACER TAB

Spacer Tabs with thickness from 3 mm (1/8") to 5 mm (13/64") meet all necessary spacing sizes, dependent on your paver size and spacing requirements.



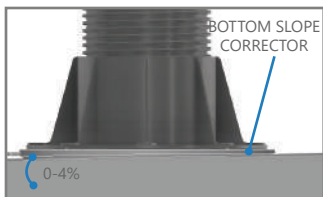
VARIABLE ANGLE SPACER TAB

Variable Angle Spacer Tabs allow pedestals to support up to eight pavers with different corner angles (special order).



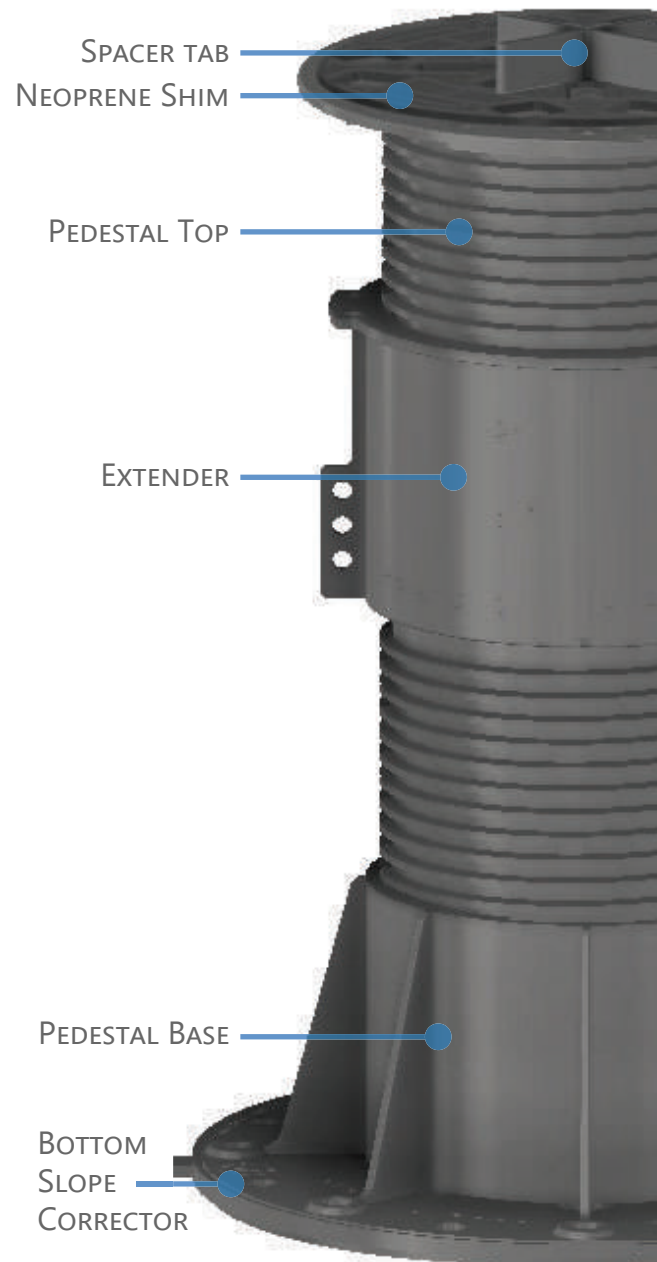
BEARER HOLDER

Bearer Holders support single and twinned 2 x 4 or 2 x 6 joists to keep bearers firmly in place on pedestals.



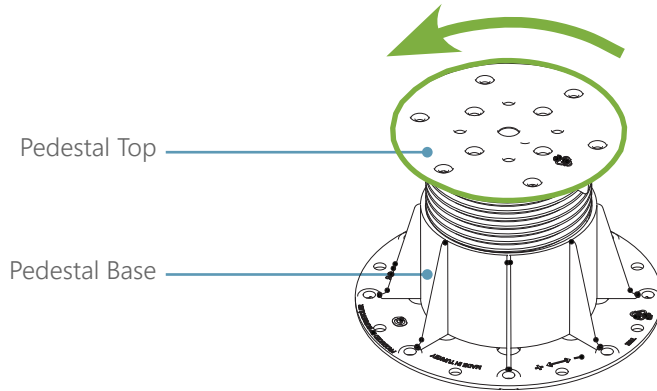
BOTTOM SLOPE CORRECTOR

Bottom Slope Correctors allow pedestals to remain firmly upright on inclines of up to 4%.



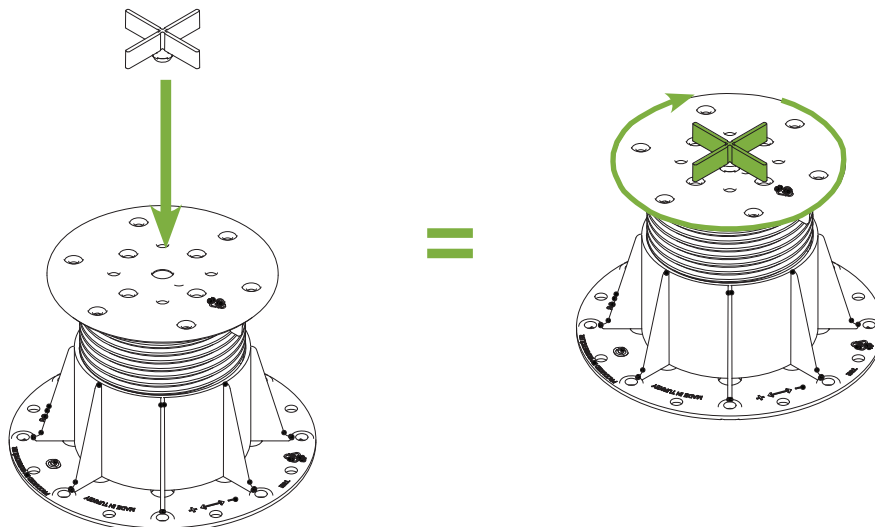
ADJUSTING PEDESTAL HEIGHT

- 1 Hold pedestal base.
- 2 Rotate pedestal top clockwise to reduce height or counter-clockwise (as shown) to increase height.



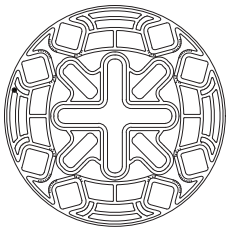
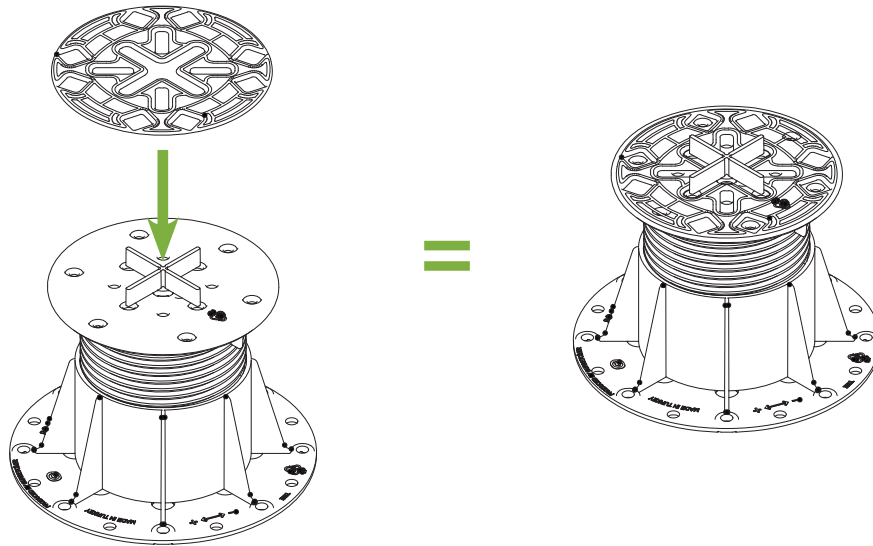
INSERTING SPACER TABS

- 1 Firmly connect spacer tab into hole on top of pedestal.
- 2 Rotate spacer tab in any direction to achieve desired orientation.

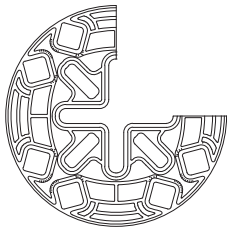


NEOPRENE SHIMS

- 1 Neoprene shims can be used together to create level surfaces when using pavers of varying thicknesses.
- 2 Always use a 2 mm whole shim underneath porcelain pavers (optional for other paver/tile products).



Whole



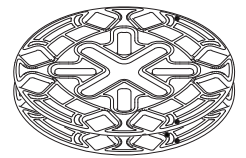
Three-Quarter



Half



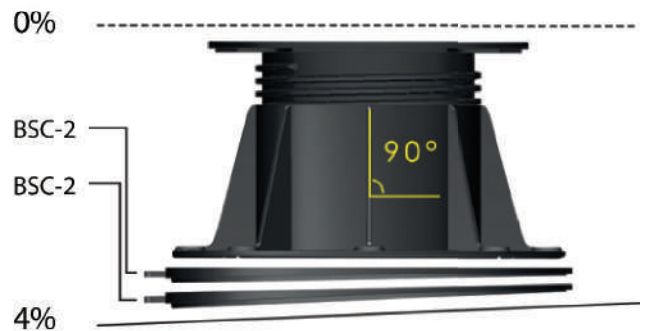
Quarter



Stacked

CORRECTING SLOPES - USING BOTTOM SLOPE CORRECTOR

- 1** Firmly connect pedestal to Bottom Slope Corrector
- 2** Stack with additional Bottom Slope Correctors for projects with greater slope

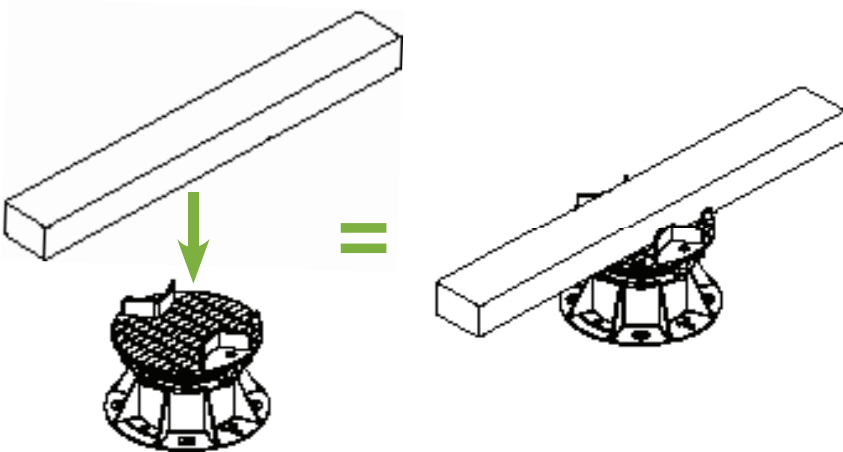


JOIST-BASED DECKING PLATFORMS - USING BEARER HOLDER

- 1 Firmly connect bearer holder into hole on top of pedestal.
- 2 Rotate bearer holder in any direction to achieve desired orientation.

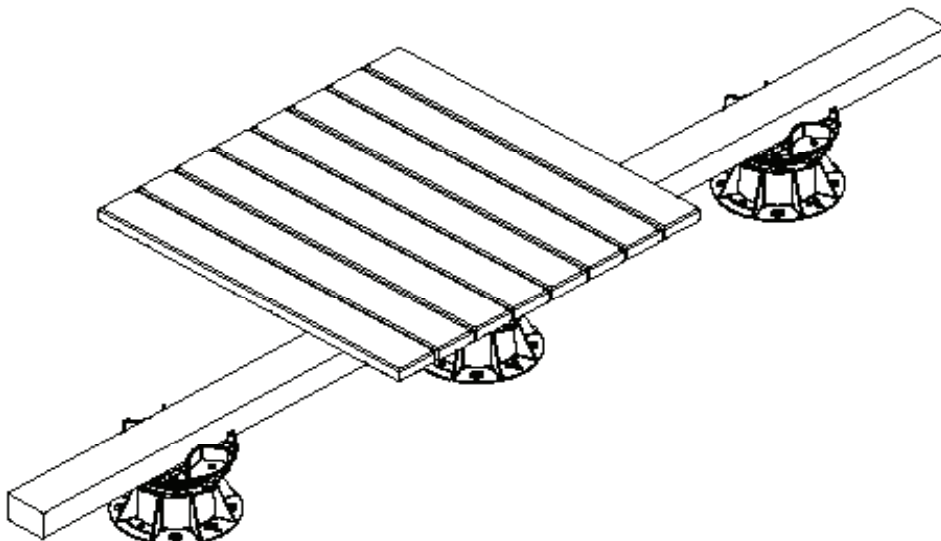


- 3 Place joist on top of the existing pedestal and bearer holder combination and drive fastening screws through tabs of bearer holder to fasten joist in place.



Joist	Spacing
2 x 4" Joist	Pedestal every 24" max.
2 x 6" Joist	Pedestal every 30" max.
2 x 8" Joist	Pedestal every 36" max.
Twinned 2 x 4" Joist	Pedestal every 48" max.

- 4 Install deckboards perpendicular to joists.

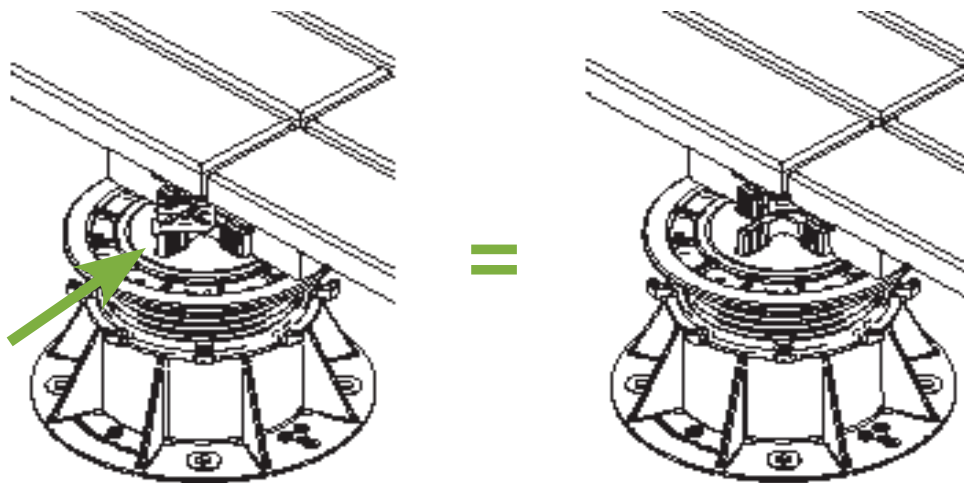


WOOD DECK TILE INSTALLATION - USING LOCK DOWN TAB

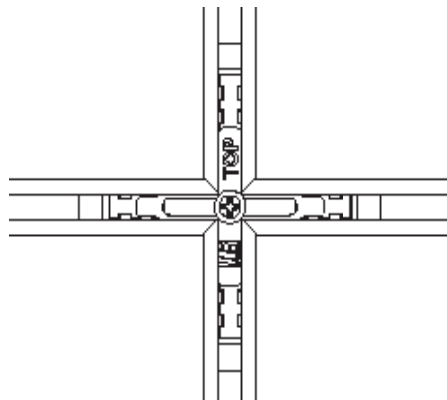
- 1** If the tile lock is not already free to move, loosen screw that holds it secure until the lock can slide from side-to-side. Place the Lock Down Tab onto the pedestal and press into place.



- 2** Place the wood deck tiles upon the pedestal. With two tiles placed, shift the tiles into the notches to allow placement of additional tiles.



- 3** Place the remaining wood deck tiles onto the pedestal.



- 4** Whether one or all tiles need to be removed, the lock must be unlocked. To unlock any wood deck tile, the process is the reverse of the locking procedure. Using a tool, slide the lock away from the tile to be removed. Do this on all corners or where a fastener secures the tile. With all locks moved, the tile can be removed.

[300] BLU-TERRACE MAINTENANCE GUIDELINES

311/312: SPIRALJACK PEDESTALS AND COMPONENTS:

No maintenance necessary.

313/314/315: CLASSIC, FLEX, & ATLANTIC LINE CONCRETE PAVERS:

CLEANING:

- Debris in Paver Cracks:
 - Debris falling between the gaps in the pavers can normally be removed with a vacuum cleaner.
 - For high debris areas, it is recommended to remove the paver and clean below it every few years.
- Pressure Washing:
 - Use pressure washing as the cleaning method removes built-up dirt, mold or mildew from your concrete paver tiles.
 - Use the lowest possible and a consistent PSI for concrete paver cleaning.
 - A maximum of 1200 PSI is suggested.
 - Test an inconspicuous area first and be careful to use even strokes to avoid lap marks.
 - It is recommended to use a professional deck cleaning contractor for best results.
- Chemical:
 - For more intense stains, use a deck cleaning product which safely cleans the concrete paver and also kills mold spores.
 - Always test any product you apply in an inconspicuous place to make sure it performs as you expect before cleaning entire paver deck.
 - If previously sealed and desired, re-seal pavers after they are cleaned.

SEALING:

- Concrete paver stabilizers or sealants can give the paver a richer finish, if desired.
- Follow Sealer Manufacturer's applications instructions and it is recommended to test an inconspicuous area first before a complete application.
- Further applications of decking oil or sealant should be undertaken at regular intervals depending on the degree of exposure of your deck to direct sunlight, local climatic conditions and the recommendations of the manufacturer of the decking oil/sealant used.

316/317: WOOD DECK TILES:

CARING FOR WOOD DECK TILES:

- Like any exterior wood product, (WDT) Wood Deck Tiles will gradually fade to a silvery gray color over time.
 - The rate at which this occurs depends largely on the degree of exposure to direct sunlight, the climatic conditions and the frequency at which any preservative treatments are applied.
 - Wood Deck Tiles are coated with a decking oil at the factory, this is just a simple decking oil basically designed to enhance the initial appearance of the tiles.
- To reduce the rate at which the tiles will naturally fade when exposed to direct sunlight and to keep the appearance of your deck at its optimum condition, we strongly recommend you apply a good quality decking oil with a brush or roller to the top surface and edges of the tiles as soon as practical after installing the tiles.
- Decking oils which contain micro-fine or nanotechnology pigments or other proprietary UV absorbing or reflecting compounds and have a high solids content are preferred for longer term results and extended periods between applications of the decking oil/sealant. These specialized products will help maximize the durability, beauty and value of your decking tiles and assist in maintaining the original wood color as long as possible.

APPROVED MAINTENANCE PRODUCTS:

- PPG Olympic Maximum Semi-Transparent Stain
- Flood CWF - UV Penetrating Oil Finish
- Penofin Penetrating Oil Finish
- Behr Weatherproofing Wood Sealer
- Thompson's Water Seal
- Messmers' UV Plus for Hardwood Decks
- Defy - Deck Stain for Hardwoods

Further applications of decking oil or sealant should be undertaken at regular intervals depending on the degree of exposure of your deck to direct sunlight, local climatic conditions and the recommendations of the manufacturer of the decking oil/sealant used.

318: PORCELAIN DECK TILES:

No maintenance necessary.

[300] BLU-TERRACE MATERIALS LIMITED WARRANTY

The offer to sell Sustainablu, LLC products is expressly limited to acceptance of the warranty terms set forth in this LIMITED WARRANTY. By purchasing a Sustainablu, LLC product, you accept the LIMITED WARRANTY terms herein. THIS LIMITED WARRANTY AND REMEDIES HEREIN ARE EXCLUSIVE AND INSTEAD OF ALL OTHER WARRANTIES AND REMEDIES, WHETHER ORAL, WRITTEN, STATUTORY, LEGAL OR EQUITABLE, EXPRESS OR IMPLIED, INCLUDING WITHOUT LIMITATION, WARRANTIES OF MERCHANTABILITY AND FITNESS FOR A PARTICULAR PURPOSE AS WELL AS WARRANTIES AGAINST HIDDEN OR LATENT DEFECTS. ALL WARRANTIES ARE EXCLUDED EXCEPT THOSE EXPRESS WARRANTIES STATED ON THE FACE OF THIS LIMITED WARRANTY. REMEDIES FOR ANY BREACH OF THIS LIMITED WARRANTY ARE LIMITED TO SUSTAINABLU' ABSOLUTE OPTION TO REPAIR OR REPLACE THE DEFECTIVE PRODUCT AND THERE IS NO OTHER REMEDY AVAILABLE. SUSTAINABLU, LLC SHALL NOT BE LIABLE FOR DAMAGE TO PROPERTY BEYOND SUSTAINABLU' PRODUCT; AND, SUSTAINABLU, LLC IS NOT LIABLE FOR DIRECT, SPECIAL, INCIDENTAL, CONSEQUENTIAL, OR PUNITIVE DAMAGES FOR ANY CLAIMS, INCLUDING BUT NOT LIMITED TO TORT, STRICT LIABILITY, STATUTORY, BREACH OF EXPRESS WARRANTY, BREACH OF IMPLIED WARRANTY, AND BREACH OF CONTRACT. NO PERSON IS AUTHORIZED TO MAKE ADDITIONAL STATEMENTS, PROMISES, GUARANTIES, WARRANTIES OR REPRESENTATIONS REGARDING PERFORMANCE OF SUSTAINABLU' PRODUCTS. Terms that are either additional to, conflicting with or different from those herein are excluded unless specifically agreed to in a separate writing and signed by a corporate officer of Sustainablu, LLC. This LIMITED WARRANTY is for the benefit of the original purchaser of the Sustainablu, LLC product who may transfer this LIMITED WARRANTY to the owner of the real estate where the warranted product is originally installed.

Concrete products may exhibit efflorescence which appears as a white stain on some colored concrete products as the result of moisture evaporation. Efflorescence is a common condition to which concrete products are susceptible. It generally clears up and eventually dissipates as concrete products age. Efflorescence is a condition that does not affect the structural integrity or the longevity of the product and is not covered under this warranty. Tile not installed immediately after delivery should be stored in a climate-controlled environment. Sustainablu, LLC products are warranted to be free from defect in material and workmanship during manufacturing based on applicable industry standards. Warranty periods begin on delivery date of the warranted product and extend for the period listed below:

- Product Lines 311 & 312, SpiralJack Paver Pedestals and Components are warranted for (5) five years if properly installed according to project specifications.
- Product Lines 313, 314, & 315, Classic, Flex, & Atlantic Line Concrete Roof Pavers are warranted for (3) three years if properly installed according to both project specifications and usage of Sustainablu's pedestal system when applicable.
- Product Lines 316 & 317, Classic and Custom Wood Deck Tiles are warranted for (5) five years if properly installed according to both project specifications and usage of Sustainablu's pedestal system when applicable.
- Product Line 318, Porcelain Pavers are warranted for (5) five years if properly installed according to both project specifications and usage of Sustainablu's pedestal system when applicable.

NOTE: Placing any paver/tile on non-Sustainablu, LLC's pedestals voids this LIMITED WARRANTY.

If any Sustainablu, LLC product fails to perform due to a defect in workmanship or materials within the applicable warranty period, then Sustainablu, LLC, at its sole option, will either repair or replace the defective product. The dollar amount of warranty coverage under this LIMITED WARRANTY shall not exceed the invoiced price for the defective product itself, excluding, installation, sales tax and freight. This LIMITED WARRANTY is void if the product is not maintained as recommended by Sustainablu, LLC. Sustainablu, LLC's warranty does not cover cosmetic scratches, dents, normal discoloration or fading. Due to inherent properties of concrete, wood and porcelain products, it is normal for variations in shading or color to be present in a finished product or occur over time due to sunlight exposure or other environmental factors and such variations in shading or color are not covered by this LIMITED WARRANTY. Sustainablu, LLC's LIMITED WARRANTY does not cover cracking, chipping or other damage caused by: (a) settling or other foundation movement or failures regardless whether caused by man-made or natural environmental (such as flood, hurricane, earthquake, lightning, fire, et al) and environmental conditions (such as air pollution, mold, mildew, et al), (b) Improper installation of Sustainablu, LLC's products and/or failure to abide by Sustainablu, LLC's installation guidelines, including but not limited to failure to install the tiles on a solid, flat surface or a surface that is not properly drained, (c) failure of non- Sustainablu, LLC products, (d) Use of Sustainablu, LLC's products in an application not recommended by Sustainablu, LLC's guidelines and local building codes, (e) Improper storage or handling after delivery, (f) Ordinary wear and tear, AND FOR ANY PRODUCT IN WHICH SUSTAINABLU, LLC HAS NOT BEEN PAID IN FULL (This will be based on Sustainablu, LLC's records). There is no warranty for damage caused by impact, neglect, and vandalism; acts of third parties or natural disaster. Alteration of product, floor or tiles voids this LIMITED WARRANTY. Installation of structures, fixtures or utilities on or through the product without prior written approval from Sustainablu voids this LIMITED WARRANTY.

It is not Sustainablu, LLC's responsibility to determine the effectiveness, fitness, suitability and safety of the Sustainablu LLC's products in connection with its use in any particular application. No person or entity is authorized by Sustainablu LLC to make any statement or representation as to the quality or performance of Sustainablu LLC products other than as contained in this warranty and Sustainablu LLC shall not be bound by any such statements or representations. This warranty may not be altered or amended except by means of a written document signed by both Sustainablu LLC and owner of said warranty. As a precondition to validate any warranty claim, purchaser must present written notice of a warranty claim to Sustainablu, LLC within 30 days after a warranty claim accrues or within 30 days after purchaser first notices an alleged defect, whichever is earlier. If purchaser or its installer believes a defect exists, do not install the product; instead, contact Sustainablu, LLC within 24 hours after notice of alleged defect and make a warranty claim to Sustainablu, LLC. While this LIMITED WARRANTY is in effect, Sustainablu, LLC and its agents shall have free access to inspect, test, repair or remedy the warranted product and Sustainablu shall have the first opportunity to remedy any alleged defect.

In any dispute as to the LIMITED WARRANTY or defective product, the purchaser or Owner making a claim (Claimant) has the burden of proving all elements under applicable law plus: (1) the product was installed according to applicable industry and project specifications, (2) the product was maintained according to applicable maintenance recommendations, and (3) the product was defective within the meaning of this LIMITED WARRANTY. In the event a civil action is filed, Sustainablu, LLC and Claimant shall attempt mediation facilitated by a mutually agreed upon neutral mediator before conducting formal discovery. At mediation, Sustainablu, LLC and Claimant shall each have a designated representative attend who has full authority to settle the civil action. Sustainablu, LLC and Claimant shall be responsible for their own attorney fees and any other expense associated with mediation as well as paying for an equal share of the mediator's fee. To obtain installation or maintenance recommendations, request information on extended warranties or make a warranty claim contact: Sustainablu, LLC, c/o Chief Financial Officer, by mail at 531 S. Water Street, Milwaukee, WI 53204.

This warranty shall only be applicable and enforceable in the United States of America and Canada.



SUSTAINABLU FOCUSES ON DESIGN INTEGRATION, PROJECT DELIVERY, AND PRODUCTS FOR ON STRUCTURE STORMWATER MANAGEMENT AND GREEN INFRASTRUCTURE. CAPABILITIES RANGE FROM **AMENITY DECKS, GREEN ROOFS, BLUE ROOFS, SOLAR ROOFS AND SMART LEAK DETECTION SYSTEMS**, PROVIDING THE MOST COMPLETE LINE FOR EFFECTIVE ON STRUCTURE STORMWATER MANAGEMENT SYSTEMS AND PRODUCTS AVAILABLE.

WITH ON-STAFF DESIGNERS AND A NETWORK OF LANDSCAPE ARCHITECTS, CONTRACTORS, ARCHITECTS, ENGINEERS, AND DEVELOPERS, SUSTAINABLU IS THE COMMON THREAD FROM IDEA CONCEPTION TO COMPLETION. THE COMPANY PROVIDES PRODUCTS FROM TOP VENDORS AROUND THE WORLD, TAILORING PRODUCTS TO EACH UNIQUE DESIGN. PRODUCT LINES OFFERED INCLUDE PAVER PEDESTALS, CONCRETE ROOF PAVERS, WOOD DECK TILES, PORCELAIN TILES, GREEN ROOFING SOLUTIONS, SMART DRAINS AND LEAK DETECTION SYSTEMS.

SUSTAINABLU HAS COMPLETED PROJECTS IN CITIES ACROSS NORTH AMERICA AND HAS REPRESENTATION AND WAREHOUSES THROUGHOUT THE UNITED STATES.

SUSTAINABLU

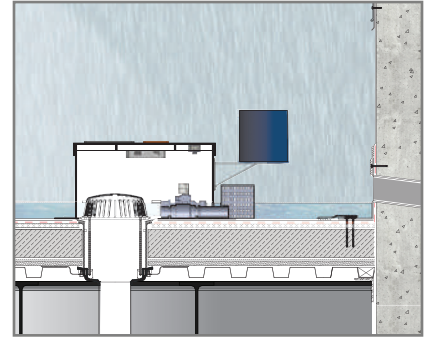
800.333.5406

ve@SUSTAINABLU.us

www.SUSTAINABLU.us

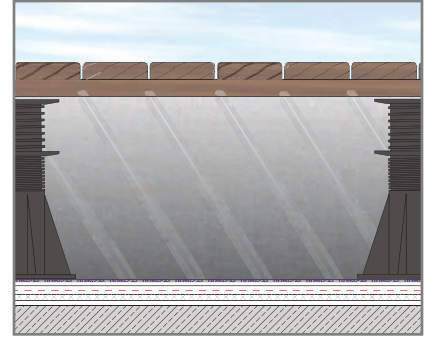
BLU-SMART

[180] - BLU-SMART SYSTEMS



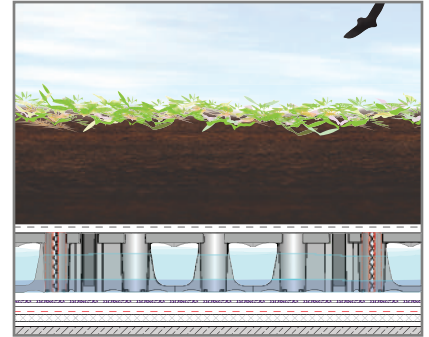
BLU-TERRACE

[300] - BLU-TERRACE SYSTEMS



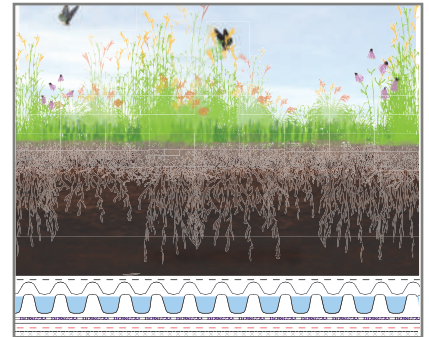
BLU-VAULT

[350] - BLU-VAULT SYSTEMS



BLU-GARDEN

[400-2400] - BLU-GARDEN SYSTEMS



BLU-SOLAR

[5000] - BLU-SOLAR SYSTEMS

