

# BLU-GARDEN

System 2400: Intensive Applications



**SUSTAINABLU**

ON STRUCTURE STORMWATER MANAGEMENT SYSTEMS

## TABLE OF CONTENTS

### System Assembly & Typical Details

[2400 Class] Blu-Garden Intensive System	2400
Blu-Garden to Roof Drain Detail	2400-TP-D1
Blu-Garden to Wall Detail	2400-TP-W1

### Product Data Sheets

Root Barrier Seam Tape	421-RBS-20
40 Mil HDPE Root Barrier	2421-RBR-40
Plaza Deck Protection Fleece - 35 oz	2422-PFC-1200
Standard Inspection Chamber	431-ISC-FUA
Pedestrian Paving Drainage Mat	433-DRM-10J
Intensive 2.4" Drainage/Retention Board	2434-DRB-60
Standard Filter Fleece	424-FFC-105
Structural Edge Elements	2445-EDG
Intensive Growth Media	2464-GIN
Drainage Aggregate	465-GDA

### Specifications

[07 33 63] 2400-Class Blu-Garden Roof System CSI Specification
--

### Installation Guides

[PFC] Protective Fleeces	322-PFC
[PPE] SpiralJack Pedestals	311-PPE
[PPC] SpiralJack Components	312-PPC

### Operations & Maintenance (O&M)

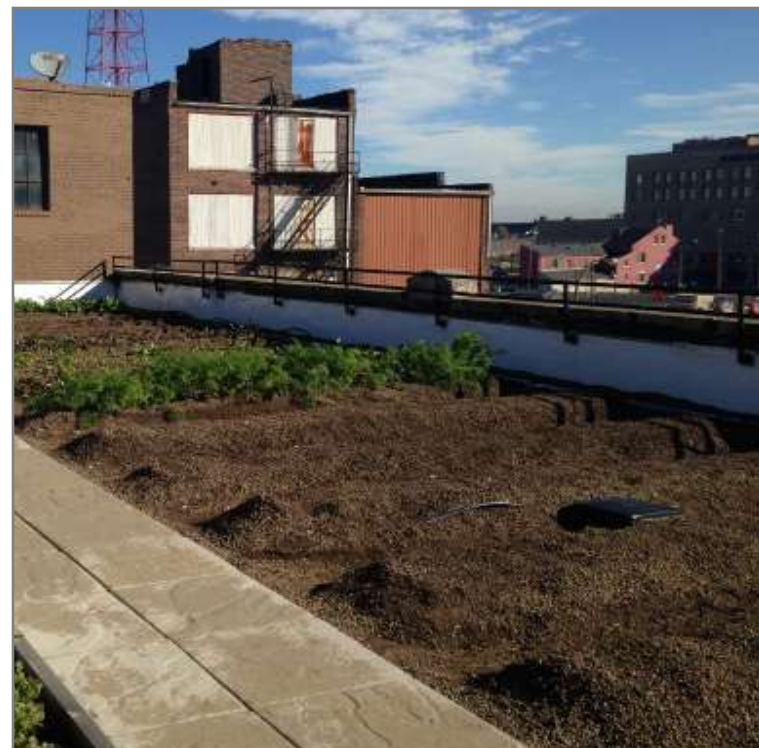
[2400-Class] Blu-Garden Maintenance Guidelines
--

### Warranty

[2400-Class] Blu-Garden Materials Limited Warranty
--

### Product Pricing

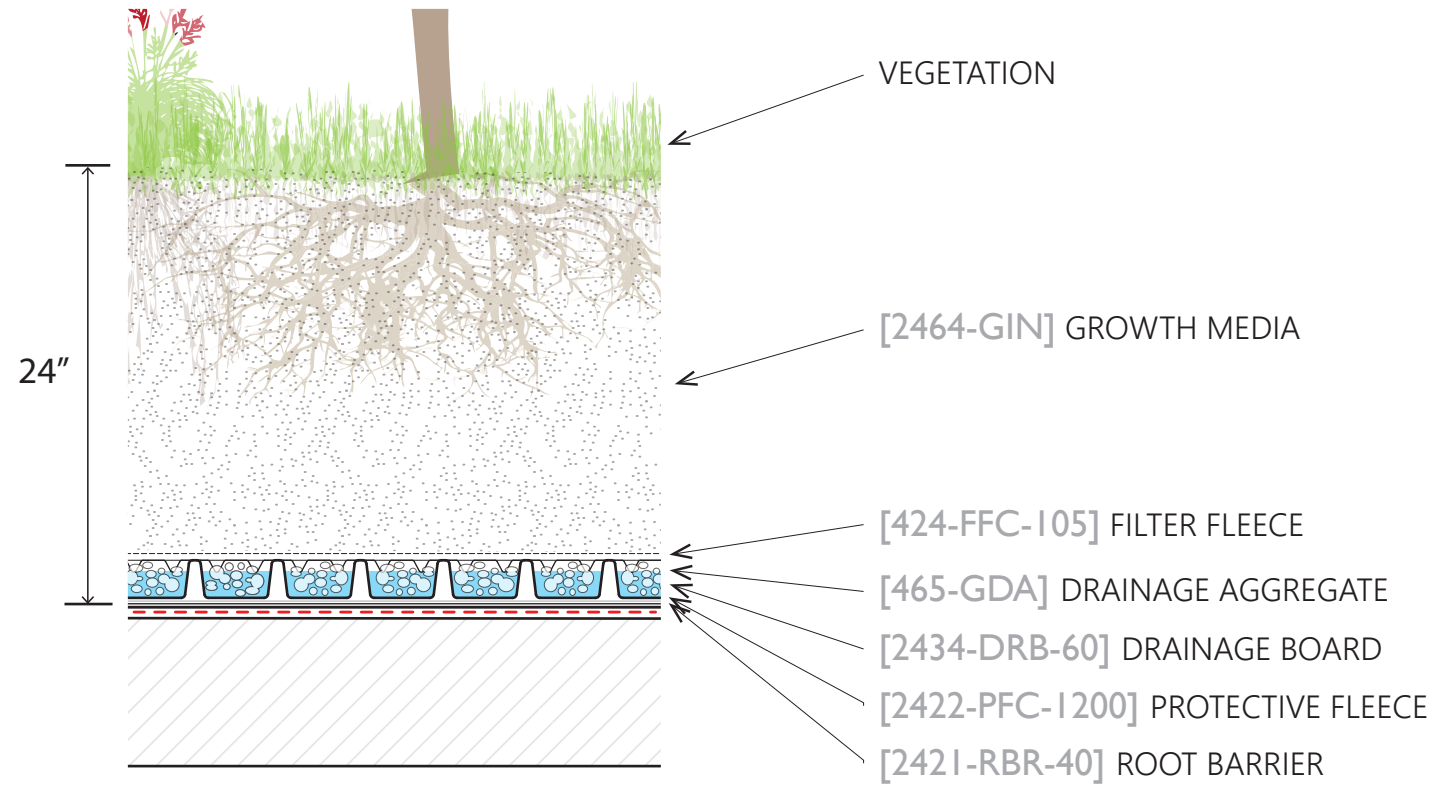
[RBR] Root Barriers	421-RBR
[PFC] Protective Fleeces	2422-PFC
[ISC] Inspection Chambers / [DRM] Drainage	431-ISC / 433-DRM
[DRB] Drainage / Retention Boards	1834-DRB
[FFC] Filter Fleeces	424-FFC
[EDG] Edge Elements	1840-EDG
[GRM] TerraPor Hydrological Growth Media	2460-GRM



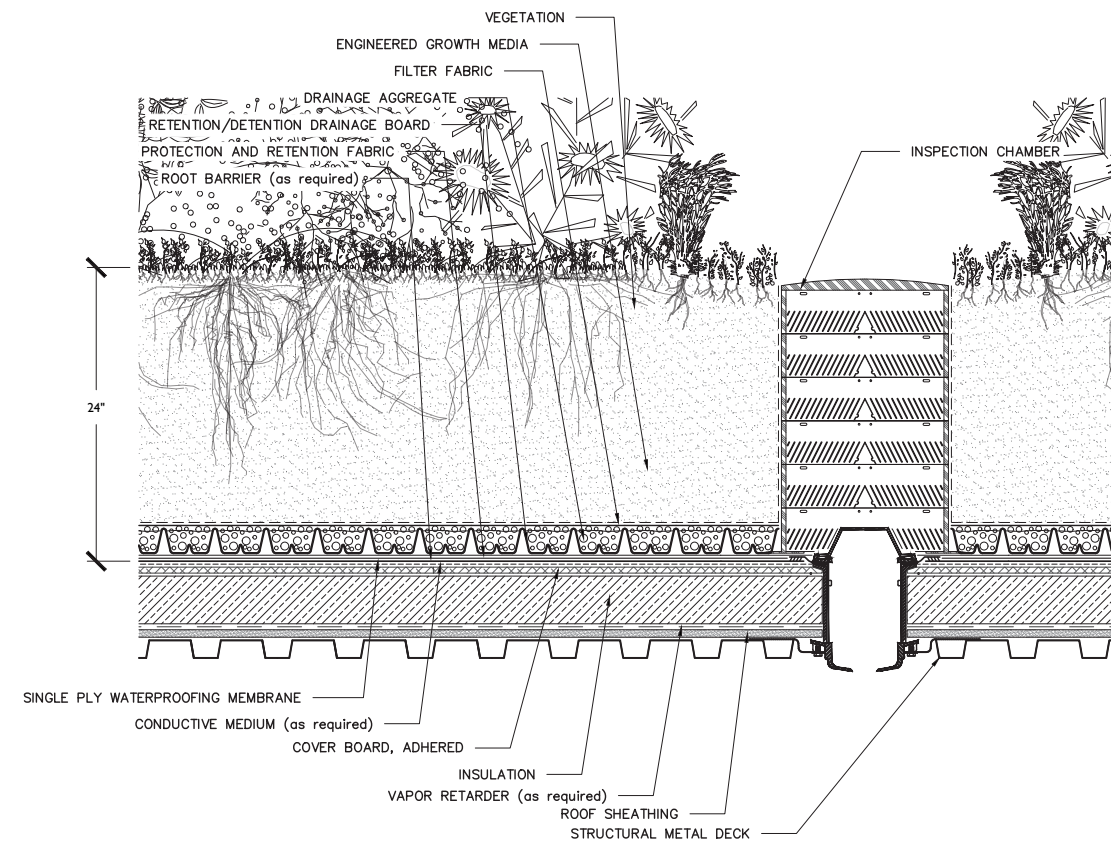
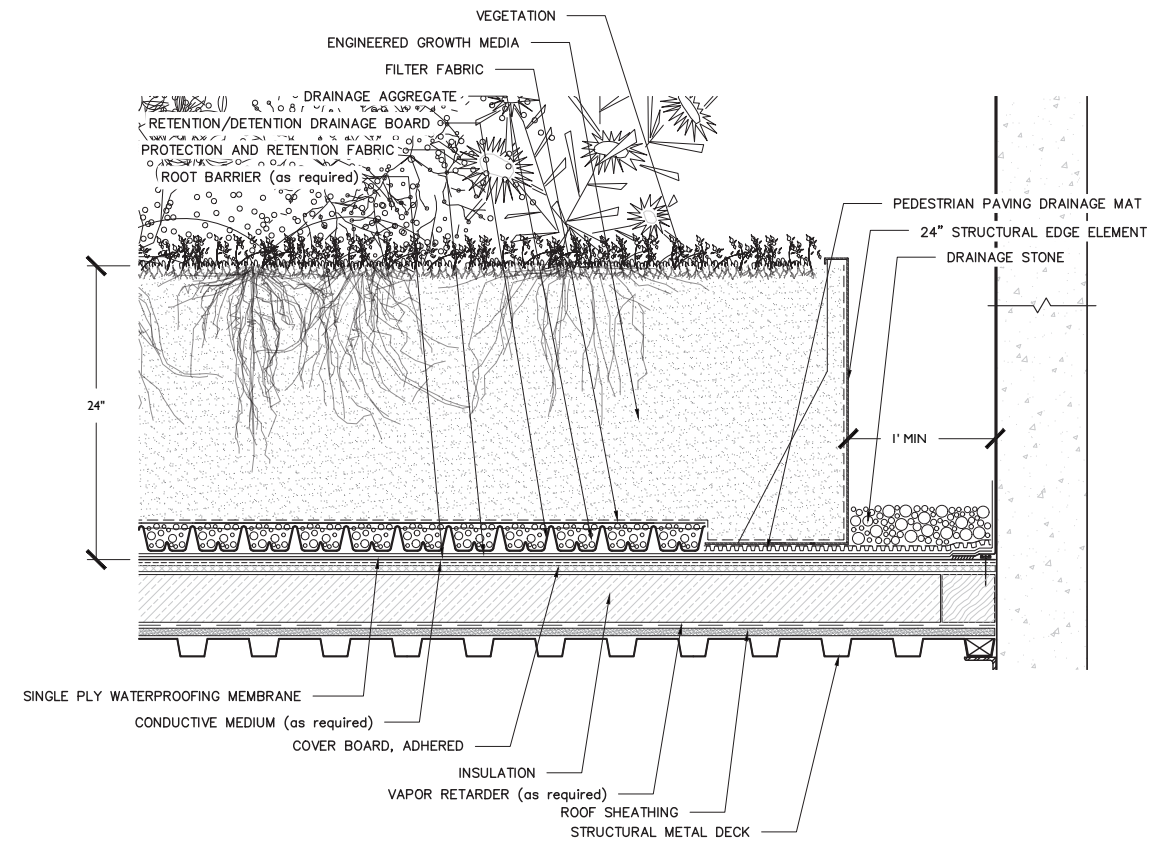
## BLU-GARDEN ASSEMBLY - INTENSIVE

**STORMWATER RETENTION**  
• 6.37 - 7.85 gallons / ft<sup>2</sup>

**SATURATED WEIGHT**  
• 117 - 167 pounds / ft<sup>2</sup>



## TYPICAL WALL & DRAIN DETAILS



## ROOT BARRIER SEAM TAPE

Root Barrier Seam Tape is an elastomeric single-sided adhesive tape used to seal the seams of our root barriers. Specific to this product, it:

- has a black polymer backing and a very **sturdy adhesive** that is specifically formulated to provide maximum performance in a green roof environment
- has a **poly release liner** which provides ease of installation
- helps assure that aggressive roots stay where they belong
- reduces the amount of root barrier overlap required



\* • Special order product

\$ • Individual Roll  
• Full Carton

■ • 100 LF per Roll  
• 6 Rolls per Carton (600 LF)

### TECHNICAL DATA

**Materials:**  
• Recycled LLDPE

**Material Thickness:**  
• 0.025"

**Roll Dimensions (W x L):**  
• 4" x 100'

**Roll Weight:**  
• 0.15 lbs. / ft<sup>2</sup>

**Tensile Strength:**  
• 4,500 lbs. / in<sup>2</sup>

**Peel Adhesion (ASTM D 1000):**  
• 20 lbs. / in

**Elongation:**  
• 700%

**Vegetated Roofing Use:**  
• To seal seams of root barriers

**Installation Requirements:**  
• Root barrier surface must be dry and free from dust or any substance that could interfere with the adhesion of the tape

## 40 MIL HDPE ROOT BARRIER

Our 40 Mil Root Barrier is a heavy duty, high density polyethylene (HDPE) sheet which is suggested for use over hot applied asphaltic, modified bitumen, cold tar pitch / built-up roofs, & EPDM Roof Membranes. Specific to this product, it:

- **directs root growth away** from waterproofing membrane, preventing it from root damage
- **withstands heavy construction traffic**
- provides **excellent protection from UV exposure** and harsh weather conditions
- features a **high tensile strength, high puncture and tear resistance**, and excellent chemical resistance
- has the strength to be able to **protect the membrane from tree roots**



\* • Special order product

\$ • Individual Roll  
• Full Pallet

■ • 1,017 ft<sup>2</sup> per Roll  
• 12 Rolls per Pallet (12,204 ft<sup>2</sup>)



LEED Credits available for:  
• Materials & Resources (MR)

### TECHNICAL DATA

**Materials:**  
• Recycled HDPE

**Material Thickness (ASTM D 751):**  
• 0.04" (40 mils)

**Roll Dimensions (W x L):**  
• 10.167' x 100'

**Roll Weight (ASTM D 461):**  
• 192 lbs. / Roll (0.189 lbs. / ft<sup>2</sup>)

**Tensile Strength (ASTM D 6693):**  
• 154 lbf / in. width

**Mullen Burst (ASTM D 751):**  
• 220 lbs. / in<sup>2</sup>

**Elongation (ASTM D 882):**  
• 800%

**Tear Resistance (ASTM D 1004):**  
• 22 lbf

**Hydrostatic Resistance (ASTM D 751):**  
• 250 lbs. / in<sup>2</sup>

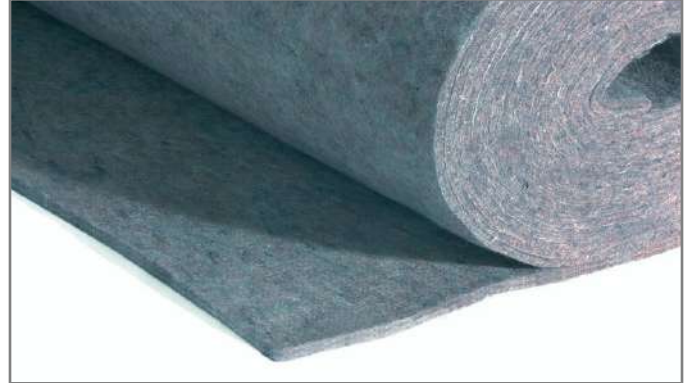
**Vegetated Roofing Use:**  
• Intensive vegetated roofs with semi-aggressive root systems

**Installation Requirements:**  
• Overlap seams by 6"  
• Tape joints with HG 3210 Seam Tape if not utilizing Leak Detection

## PLAZA DECK PROTECTIVE FLEECE - 35 OZ

Our Plaza Deck Protective Fleece is designed specifically for use within Plaza Deck green roofing systems with heavy loads & vehicular and/or pedestrian traffic. Specific to this product, it:

- **protects the roof membrane** and/or root barrier against damage from high mechanical demands
- **separates materials** of incompatible substrates from one another
- **stores water** & nutrients, depending on its function
- has a mass/structure and water holding capacity designed with the dead load weight, horizontal pressures, and plant palettes of the Plaza deck roof system in mind for a **balance of water holding capacity and protection**



Protection and Storage Fleece RMS 1200 by



• Special order product



• Individual Roll  
• Full Pallet



• 323 ft<sup>2</sup> per Roll  
• 8 Rolls per Pallet (2,576 ft<sup>2</sup>)



LEED Credits available for:  
• Materials & Resources (MR)

### TECHNICAL DATA

**Materials:**

- Polypropylene, Polyester & Recycled Acrylic Thread

**Material Thickness:**

- 0.34", 35 oz.

**Roll Dimensions (W x L):**

- 6' 6 3/4" x 49' 2 1/2"

**Roll Diameter:**

- 1' 3 3/4"

**Roll Weight:**

- 79 lbs.

**Total Saturated Weight:**

- 1.68 lbs. / ft<sup>2</sup>

**Water Holding Capacity:**

- 0.28 in<sup>3</sup> / in<sup>2</sup> (0.171 gal / ft<sup>2</sup>)

**Rot & Pathogen Resistant:**

- Yes

**Puncture Resistant:**

- Yes - Spade Resistant

**Vegetated Roofing Use:**

- Accessible vegetative roofs

**Installation Requirements:**

- Overlap fabric by 6"

## STANDARD INSPECTION CHAMBER

The Triangle Water Conduit System is designed for vegetative roofs requiring rapid water drainage and distribution. The Triangle Water Conduit System consists of:

- **ISC-FUA** - Standard Inspection Chamber
- **TWC-WLP** - Triangle Water Conduit Profile

Specific to this product, it:

- has **connection options** for one Triangle Water Conduit Profile on each side of the Standard Inspection Chamber
- **protects the outlets** from severe external effects
- incorporates **drainage slots on all sides** that retain growth media while allowing water to flow freely through
- is capped by an **easily removable cover** to allow access for inspection and for simple maintenance to remove any excess debris
- is also available with a **custom slotted aluminum cover**



Combi Inspection Chamber TKS Plus by



LEED Credits available for:  
• Materials & Resources (MR)



- Individual Unit
- Full Carton
- Full Pallet



- 6 Units per Carton
- 16 Cartons per Pallet (96 Units)

## TECHNICAL DATA

### Materials:

- UV Resistant Recycled ABS Plastic

### Inspection Chamber Dimensions (W x L):

- 14.5" x 14.5" (shaft)
- 18.5" x 18.5" (base)

### Inspection Chamber Height:

- 4.33" minimum
- Height adjustable in 4" segments
- Maximum Height of 32"

### Inspection Chamber Weight:

- 5.3 lbs. / unit

### Shaft Floor Opening:

- 11 3/4"

### Water Discharge Capacity (each system):

- at 0% Slope = 17.91 gallons / minute
- at 2% Slope = 19.65 gallons / minute
- at 3% Slope = 19.81 gallons / minute

\*dependent on media type

### Compressive Strength:

- 330 lbs.

### Vegetated Roofing Use:

- Ancillary drainage component for use as a roof outlet inspection on vegetated roofs

### Installation Requirements (Per 2,000 ft<sup>2</sup> area):

- (1) ISC-FUA Standard Inspection Chamber
- (30) TWC-WLP Triangle Water Conduit Profiles

## PEDESTRIAN PAVING DRAINAGE MAT

Our Pedestrian Paving Drainage Mat is designed for drainage beneath accessible areas that do not need water storage and on vertical building components. Specific to this product, it:

- is a **composite drainage layer** consisting of a three-dimensional drainage core and a filter fabric
- includes a **filter fabric bonded to the core**, preventing intrusion of the overburden into the drainage channels
- **retains soil or sand particles** as well as freshly placed concrete allowing filtered water to pass through to the drainage core
- is typically used in areas necessitating a **moderate compressive strength material for drainage**, specifically for low load pedestrian accessibility for pavers, concrete or asphalt walkways, and patios



• Special order product



• Individual Roll  
• Full Pallet



• 200 ft<sup>2</sup> per Roll  
• 7 Rolls per Pallet (1,400 ft<sup>2</sup>)



LEED Credits available for:  
• Materials & Resources (MR)

### TECHNICAL DATA

**Materials:**

- Recycled HDPE, Polypropylene Thread

**Material Thickness:**

- 0.40"

**Roll Dimensions (W x L):**

- 4' x 50'

**Roll Weight:**

- 39 lbs.

**Compressive Strength (ASTM D 1621):**

- 15,000 lbs. / ft<sup>2</sup>

**Drainage Core Flow (ASTM D 4716):**

- 21 gal / min / ft

**Filter Fabric Flow Rate (ASTM D 4491):**

- 140 gal / min / ft<sup>2</sup>

**CBR Puncture (ASTM D 6241):**

- 250 lbs.

**Grab Tensile (ASTM D 4632):**

- 100 lbs.

**Vegetated Roofing Use:**

- Pedestrian compressive strength grade drainage used below pathways or vegetated areas that do not need water storage

**Installation Requirements:**

- Peel fabric back two dimples and overlap two rows of dimples, snap in place.
- Fold fabric back over joint.
- Cover boards with overburden immediately to protect from UV rays & wind uplift

## INTENSIVE 2.4" DRAINAGE / RETENTION BOARD

Our Intensive 2.4" Drainage / Retention (DR) Board provides water storage for intensive roofs with large plant palettes. Specific to this product, it:

- is a plastic panel that **retains water within pockets** on the upper side, making water available to vegetation
- has **drill holes to drainage channels** for diffusion and irrigation
- channels surplus water through its **bottom-sided canal system** for secure drainage
- allows for the incorporation of a complete array of zone appropriate **plantings, including shrubs & trees**; in a greater than 12" depth assembly
- **transfers loads uniformly** to the substructure via large contact areas



Protection and Drainage Board FKD 60BU by

**OPTIGRÜN**<sup>®</sup>  
ROOF GREENING



LEED Credits available for:  
• Materials & Resources (MR)



- Individual Unit
- Full Section
- Full Pallet



- 25.28 ft<sup>2</sup> per Unit
- 30 Units per Section (758 ft<sup>2</sup>)
- 6 Sections per Pallet (4,550 ft<sup>2</sup>)

## TECHNICAL DATA

### Materials:

- Recycled HDPE

### Material Thickness:

- 2.36"

### Board Dimensions (W x L):

- 3' 3 1/2" x 7' 8 1/8"

### Board Area:

- 25.28 ft<sup>2</sup>

### Board Weight:

- 0.47 lbs. / ft<sup>2</sup>

### Compressive Strength:

- 100.8 lbs. / in<sup>2</sup> (filled)

### Water Holding Capacity:

- 0.91 in<sup>3</sup> / in<sup>2</sup> (0.564 gal / ft<sup>2</sup>) (filled)

### Drainage Performance (fully saturated):

- at 2% Slope = 15.49 in<sup>3</sup> / ft / sec

### Vegetated Roofing Use:

- High load capacity systems that harvest stormwater and cool buildings

### Installation Requirements:

- Butt boards tight together
- Cover boards with overburden immediately to protect from UV rays & wind uplift



## STANDARD FILTER FLEECE

Our Standard Filter Fleece is used when the drainage system needs to be protected from fine particles entering from the substrate layer. Specific to this product, it:

- acts as a separation between vegetation areas and vegetation-free zones
- **separates drainage and substrate layers** in multi-layered structures
- is designed with the perfect elasticity to **allow the fibrous root structures of extensive plant species** to penetrate it
- **enables plants to uptake water** from the drainage / retention board without deteriorating the fleece's filtration capacity



Filter Fleece FIL 105 by



- Individual Roll
- Full Pallet



- 2,153 ft<sup>2</sup> per Roll
- 11 Rolls per Pallet (23,683 ft<sup>2</sup>)

## TECHNICAL DATA

### Materials:

- Polypropylene Thread

### Material Thickness:

- 0.04", 3 oz.

### Roll Dimensions (W x L):

- 6' 6 3/4" x 328' 1"

### Roll Diameter:

- 11"

### Filtration Capability:

- Up to No. 140 Sieve

### Total Saturated Weight:

- 0.02 lbs. / ft<sup>2</sup>

### Tensile Strength (CBR Test):

- 1.08 lbs. / in<sup>2</sup>

### Puncture Resistance:

- 269.7 lbs.

### Rot & Pathogen Resistance:

- Yes

### Vegetated Roofing Use:

- Vegetative roofs with either a drainage/retention board or dual-media system

### Installation Requirements:

- Overlap seams by 6"
- Cover with growth media

## STRUCTURAL EDGE ELEMENTS

Our Structural Edge Elements are designed as a definite boundary between gravel / paver and growth media, providing the structural stability for heavy traffic and wear that highly accessible intensive green roofs or roof gardens encounter. Specific to this product, it:

- is **structurally stabilized** with L-support gusset plates, reinforcing the vertical wall at regular intervals dependent on the height of the edge
- utilizes a **"smooth slide" design** to make secure, invisible connections
- has **pre-fabricated inside and outside corners** for ease of installation
- is **water retardant & weather resistant**, applicable with temperatures between -58°F up to 176°F
- is **lightweight combined with high stiffness** and dimensional stability
- has a black polyethylene core that offers **UV protection**, material stability, and **long term application outdoors**



Edge Elements by  
**OPTIGRÜN**  
ROOF GREENING



• Special order product



• System (Lengths, Clips, & Corners)



• Configuration of packaging is dependent on the size of the order. Bulk pallets of materials are available for larger jobs.

### TECHNICAL DATA

#### System Type:

- Monolithic / Contiguous / Modular

#### Materials:

- 0.3 mm Aluminum surface layers (both sides)
- Polyethylene core

#### Material Thickness:

- 3 mm

#### Roof / Deck Slope Constraint:

- Up to 5° slope or 1:12 roof pitch

#### Vegetated Roofing Use:

- High traffic intensive vegetated roofs / plaza decks

#### Installation Requirements:

- Lay edge profile sections end to end on top of drainage mat, with foot of restraint toward vegetative portion of roof
- Slide Male Clips into Female Lengths
- Connect all components as shown on edging plan



**1845-ESF-18 18" Female Profile:**  
Dimensions (H x W x L): 18" x 16" x 48"  
Weight: 2.41 lbs. / LF



**1845-ESM-18 18" Male Connector:**  
Dimensions (H x W x L): 17.70" x 11.82" x 30"  
Weight: 2.97 lbs. / LF



**1845-ES9-18 18" Male Corner:**  
Dimensions (H x W x L): 17.70" x 12" x 12"  
Weight: 2.23 lbs. / LF

#### Material Finishes:



Mill (natural aluminum)



Brushed Stainless



Brushed Bronze



Dark Bronze



Black



Dark Green



Marine Blue



Hunter Red



Caution Yellow

\*Structural Aluminum Edge profiles are also available in 15" & 24" heights.

## TERRAPOR IN - INTENSIVE GROWTH MEDIA

Our Intensive Blend is mixed for vegetated roofs with large plant palettes that include trees & shrubs. We custom blend per a project's plant palette. Intensive Blend growth media offers many advantages:

- a precisely blended growth media designed for intensive green roof systems with a **media depth greater than 12 inches**
- designed to be **lightweight**, Intensive Blend growth media uses porous materials designed to **retain maximum amounts of water** while simultaneously **promoting drainage**
- suitable for the widest variety of **perennials, ornamental grasses, shrubs, and trees**
- blended to strict **FLL-compliant** guidelines



- \$**
- 1 ft<sup>3</sup> Bag
  - 2 yd<sup>3</sup> Supersack
  - Bulk

- 📦**
- 1 ft<sup>3</sup> Bag
  - 2 yd<sup>3</sup> Supersack
  - Bulk



LEED Credits available for:  
• Materials & Resources (MR)

### QUICK REFERENCE & SHIPPING DATA

#### Vegetated Roofing Use:

- Standard intensive vegetated roofs

#### Coverage (1 yd<sup>3</sup>):

- at 12" = 27 ft<sup>2</sup>
- at 18" = 18 ft<sup>2</sup>
- at 24" = 13.5 ft<sup>2</sup>

#### Dry Weight (approximate):

- 43 lbs. / ft<sup>3</sup>

#### Saturated Weight (approximate):

- 76 lbs. / ft<sup>3</sup>
- at 12" = 76.0 lbs. / ft<sup>2</sup>
- at 18" = 114.0 lbs. / ft<sup>2</sup>
- at 24" = 152.0 lbs. / ft<sup>2</sup>

#### Bulk Shipping Data:

- Bulk material weighs approximately 1,500 lbs. / yd<sup>3</sup>
- 32 - 34 yd<sup>3</sup> in dump trailer, 22 - 24 yd<sup>3</sup> in a tri-axle

#### 2 yd<sup>3</sup> Super Sacks:

- 2 yd<sup>3</sup> Super Sacks weigh approximately 3,000 lbs.
- 15 - 16 2 yd<sup>3</sup> Super Sacks / flatbed trailer

#### 1 ft<sup>3</sup> Bags:

- 1 ft<sup>3</sup> Bag weighs approximately 55.3 lbs.
- 60 Bags / pallet
- 14 - 15 pallets / flatbed trailer

### TECHNICAL DATA

\*Third party growth media analysis & testing completed by an authorized FLL Laboratory.

<u>Grain Size Distribution:</u>	<u>mm</u>	<u>Inches</u>	<u>% of Dry Weight</u>
Passing 1/2" Sieve	12.50	0.50	100
Passing 3/8" Sieve	9.53	0.375	90 - 100
Passing 1/8" Sieve	3.18	0.125	65 - 95
Passing #18 Sieve	1.00	0.039	30 - 65
Passing #60 Sieve	0.25	0.010	15 - 35
Passing #230 Sieve	0.06	0.002	5 - 25
Silt & Clay Fraction	< 0.06	< 0.002	< 5

<u>Density:</u>	<u>g / cm<sup>3</sup></u>	<u>lbs. / ft<sup>3</sup></u>
Application Density	0.74 - 0.93	46 - 58
Saturated Density	1.06 - 1.26	66 - 79
Dry Media		<u>% of Total Weight</u> 31 - 62

<u>Water &amp; Air Management:</u>	<u>% by Volume</u>	<u>in<sup>3</sup> / ft<sup>3</sup></u>
Saturated Water Capacity	35 - 75	604 - 1295
Saturated Air Capacity	> 10	> 173
Saturated Hydraulic Conductivity	<u>cm / hour</u> > 5.0	<u>inches / hour</u> > 1.9

<u>pH, Lime, &amp; Salt Content:</u>	<u>units</u>	<u>% as CaCO<sub>3</sub></u>	<u>mmhos / cm</u>
pH (saturated paste)	6.0 - 8.5	-	-
Carbonate Content	-	< 2.5	-
Electrical Conductivity	-	-	< 2.5

<u>Organics:</u>	<u>% of Dry Weight</u>
Organic Matter	7.5 - 10.0
C/N Ratio	< 25:1

<u>Nutrients:</u>	<u>mg / l Saturated Extract</u>	<u>lbs. / 1,000 ft<sup>3</sup></u>	<u>FLL Parameters lbs. / 1,000 ft<sup>3</sup></u>
Nitrogen (NO <sub>3</sub> + NH <sub>4</sub> as N)	351 - 417	12 - 14	3 - 15
Phosphorous (as P <sub>2</sub> O <sub>5</sub> )	189 - 216	6 - 7	1 - 7
Potassium (K <sub>2</sub> O)	324 - 417	12 - 15	6 - 15
Calcium (Ca)	729 - 1134	31 - 48	19 - 65
Magnesium (Mg)	243 - 324	10 - 14	3 - 15
Sulfur (as SO <sub>4</sub> -S)	81 - 97	3.0 - 3.5	1 - 3.5
Copper (Cu)	7 - 14	0.25 - 0.50	0.25 - 0.50
Zinc (Zn)	0.28 - 0.83	0.01 - 0.03	0.01 - 0.03
Iron (Fe)	27 - 81	1 - 3	1 - 3
Manganese (Mn)	27 - 81	1 - 3	1 - 3
Boron (Water Soluble B)	7 - 14	0.25 - 0.50	0.25 - 0.50

<u>Cation Exchange Capacity:</u>	<u>meg / 100g dw</u>
CE <sub>cap</sub>	> 7

## TERRAPOR DR - DRAINAGE AGGREGATE

Our Drainage Aggregate is a granular drainage medium specifically designed for use as a filler substrate beneath our multi-layer green roof systems. We provide extensive, semi-intensive, & intensive blends of our Drainage Aggregate. Drainage Aggregate offers many advantages:

- most commonly used as a **pressure-resistant fill** within drainage boards
- an **excellent bedding material** for pavers as a maintenance path or patio
- **embedded drainage channels** may be used to transfer excess water quickly to roof drains or scuppers



LEED Credits available for:

- Materials & Resources (MR)



- 1 ft<sup>3</sup> Bag
- 2 yd<sup>3</sup> Supersack
- Bulk



- 1 ft<sup>3</sup> Bag
- 2 yd<sup>3</sup> Supersack
- Bulk

## QUICK REFERENCE & SHIPPING DATA

### Vegetated Roofing Use:

- Granular drainage layer

### Coverage (1 yd<sup>3</sup>):

- at 3" = 108 ft<sup>2</sup>
- at 4" = 81 ft<sup>2</sup>
- at 6" = 54 ft<sup>2</sup>

### Dry Weight (approximate):

- 40 lbs. / ft<sup>3</sup>

### Saturated Weight (approximate):

- 52 lbs. / ft<sup>3</sup>
  - at 3" = 14.0 lbs. / ft<sup>2</sup>
  - at 4" = 17.33 lbs. / ft<sup>2</sup>
  - at 6" = 26.0 lbs. / ft<sup>2</sup>

### Bulk Shipping Data:

- Bulk material weighs approximately 1,080 lbs. / yd<sup>3</sup>
- 32 - 34 yd<sup>3</sup> in dump trailer, 22 - 24 yd<sup>3</sup> in a tri-axle

### 2 yd<sup>3</sup> Super Sacks:

- 2 yd<sup>3</sup> Super Sacks weigh approximately 2,160 lbs.
- 15 - 16 2 yd<sup>3</sup> Super Sacks / flatbed trailer

### 1.5 yd<sup>3</sup> Super Sacks:

- 1.5 yd<sup>3</sup> Super Sacks weigh approximately 1,620 lbs.
- 21 - 22 1.5 yd<sup>3</sup> Super Sacks / flatbed trailer

### 1 ft<sup>3</sup> Bags:

- 1 ft<sup>3</sup> Bag weighs approximately 40.0 lbs.
- 60 Bags / pallet
- 14 - 15 pallets / flatbed trailer

## TECHNICAL DATA

### Grain Size Distribution:

	mm	Inches	% of Dry Weight
Passing 1/2" Sieve	12.50	0.50	95 - 100
Passing 3/8" Sieve	9.53	0.375	75 - 90
Passing 1/4" Sieve	6.35	0.25	30 - 45
Passing 1/8" Sieve	3.18	0.125	10 - 25
Passing #18 Sieve	1.00	0.039	0 - 15
Passing #60 Sieve	0.25	0.010	0 - 10
Passing #230 Sieve	0.06	0.002	0 - 5

### Density:

	g / cm <sup>3</sup>	lbs. / ft <sup>3</sup>
Application Density	0.55 - 0.72	35 - 45
Saturated Density	0.70 - 0.95	44 - 60

### Water & Air Management:

	% by Volume	in <sup>3</sup> / ft <sup>3</sup>
Saturated Water Capacity	15 - 25	260 - 432
Saturated Air Capacity	35 - 45	605 - 778

### Pore Volume:

	% by Volume
Total	50 - 75

### pH, Lime, & Salt Content:

	units	% as CaCO <sub>3</sub>	mmhos / cm
pH (in CaCl <sub>2</sub> )	6.0 - 8.5	-	-
Carbonate Content	-	< 2.5	-
Electrical Conductivity	-	-	< 2.5

## [RBR] ROOT BARRIERS

Product #	Product Description	Suggested Market Price
421-RBS-20*	Root Barrier Seam Tape Size Available: 4" x 100' (33.3 SF/Roll) 6 Rolls/Carton	Individual Roll Price Full Carton Price \$114.10/Roll \$109.44/Roll
2421-RBR-40*	40 Mil HDPE Root Barrier Size Available: 10.17' x 100' (1,017 SF/Roll) 12 Rolls/Pallet	Individual Roll Price Full Pallet Price \$0.89/SF \$0.79/SF

**FULL LOAD PRICING AVAILABLE FOR DISTRIBUTORS AND LARGE PROJECT CUSTOMERS**



Seam Tape



40 Mil  
Root Barrier

\* ALL ROOT BARRIERS ARE SPECIAL ORDER ITEMS - DOWNPAYMENTS REQUIRED ON ALL SPECIAL ORDER ITEMS - PROVIDE 1-2 WEEKS FOR DELIVERY FROM DOWNPAYMENT DATE.

## [PFC] PROTECTIVE FLEECES

Product #	Product Description	Suggested Market Price
2422-PFC-1200*	Plaza Deck Protective Fleece - 35 oz Size Available: 6'-6 3/4" x 49'-2 1/2" (323 SF/Roll) 8 Rolls/Pallet	Individual Roll Price \$0.59/SF Full Pallet Price \$0.56/SF

**FULL LOAD PRICING AVAILABLE FOR DISTRIBUTORS AND LARGE PROJECT CUSTOMERS**



Plaza Deck  
Protective Fleece

\* DENOTES SPECIAL ORDER ITEM - DOWNPAYMENTS REQUIRED ON ALL SPECIAL ORDER ITEMS - PROVIDE 6-9 WEEKS FOR DELIVERY FROM DOWNPAYMENT DATE.

## [ISC] INSPECTION CHAMBERS / [DRM] DRAINAGE

Product #	Product Description		Suggested Market Price
433-DRM-10J*	Pedestrian Paving Drainage Mat Size Available: 4' x 50' (200 SF/Roll) 7 Rolls/Pallet	Individual Roll Price Full Pallet Price	\$0.75/SF \$0.68/SF
431-ISC-FUA	Standard Inspection Chamber Size Available: 14-1/2" x 14-1/2" x 4" 6 Drainboxes/Carton 16 Cartons/Pallet	Individual Unit Price Full Carton Price Full Pallet Price	\$105.36EA \$81.94/EA \$73.75/EA
431-ISC-SID	Standard Inspection Chamber Extenders Size Available: 4" Extender 22 4" Extenders/Carton 12 Cartons/Pallet	Individual Unit Price Full Carton Price Full Pallet Price	\$43.03/EA \$33.47/EA \$30.12/EA

**FULL LOAD PRICING AVAILABLE FOR DISTRIBUTORS AND LARGE PROJECT CUSTOMERS**



Pedestrian Paving  
Drainage Mat



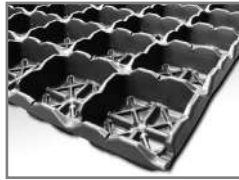
Standard Inspection  
Chamber and  
Accessories

\* DENOTES A SPECIAL ORDER ITEM - DOWNPAYMENTS REQUIRED ON ALL SPECIAL ORDER ITEMS - PROVIDE 6-9 WEEKS FOR DELIVERY FROM DOWNPAYMENT DATE.

## [DRB] DRAINAGE / RETENTION BOARDS

Product #	Product Description	Suggested Market Price
2434-DRB-60	Intensive 2.4" Drainage / Retention Board Size Available: 7'-8 1/8" x 3' 3-1/2" x 2.4" 30 Boards/Section 6 Sections/Pallet	Individual Unit Price \$2.48/SF Full Section Price \$2.17/SF Full Pallet Price \$1.79/SF

**FULL LOAD PRICING AVAILABLE FOR DISTRIBUTORS AND LARGE PROJECT CUSTOMERS**



Intensive 2.4"  
DR Board

\* DENOTES A SPECIAL ORDER ITEM - DOWNPAYMENTS REQUIRED ON ALL SPECIAL ORDER ITEMS - PROVIDE 6-9 WEEKS FOR DELIVERY FROM DOWNPAYMENT DATE.



## [FFC] FILTER FLEECES

Product #	Product Description	Suggested Market Price
424-FFC-105	Standard Filter Fleece Size Available: 6'-6 3/4" x 328' 1" (2,153 SF/Roll) 11 Rolls/Pallet	Individual Roll Price Full Pallet Price
		\$0.15/SF \$0.13/SF

**FULL LOAD PRICING AVAILABLE FOR DISTRIBUTORS AND LARGE PROJECT CUSTOMERS**



Standard Filter Fleece

\* DENOTES A SPECIAL ORDER ITEM - DOWNPAYMENTS REQUIRED ON ALL SPECIAL ORDER ITEMS - PROVIDE 6-9 WEEKS FOR DELIVERY FROM DOWNPAYMENT DATE.

## [EDG] EDGE ELEMENTS

Product #	Product Description	Suggested Market Price
2445-EDG*	Structural Edge Elements (AVAILABLE IN RAL COLORS) Size Available: 15" Lengths, Clips & Corners 18" Lengths, Clips & Corners 24" Lengths, Clips & Corners	System Price \$63.17/LF System Price \$72.51/LF System Price \$96.27/EA

**FULL LOAD PRICING AVAILABLE FOR DISTRIBUTORS AND LARGE PROJECT CUSTOMERS**



Structural Edge Elements

\* DENOTES A SPECIAL ORDER ITEM - DOWNPAYMENTS REQUIRED ON ALL SPECIAL ORDER ITEMS - PROVIDE 6-9 WEEKS FOR DELIVERY FROM DOWNPAYMENT DATE.

## [GRM] TERRAPOR HYDROLOGICAL GROWTH MEDIA

Product #	Product Description	East Coast Suggested Market Price	Midwest/South Suggested Market Price	Northwest Suggested Market Price
2464-GIN	TerraPor IN - Intensive Size Available: 1 Cubic Foot Bags 2 CY Supersacks Bulk	\$214.98/CY \$131.69/CY \$102.84/CY	N/A \$107.79/CY \$83.61/CY	N/A \$112.97/CY \$84.59/CY
2464-INL	TerraPor INL - UltraLite Intensive Size Available: 1 Cubic Foot Bags 2 CY Supersacks Bulk	\$244.76/CY \$161.47/CY \$132.62/CY	N/A \$135.50/CY \$111.32/CY	N/A \$141.38/CY \$113.00/CY
465-GDA	TerraPor DR - Drainage Aggregate Size Available: 1 Cubic Foot Bags 2 CY Supersacks Bulk	\$239.82/CY \$151.17/CY \$119.91/CY	N/A \$129.51/CY \$109.27/CY	N/A \$115.47/CY \$89.57/CY



- EAST COAST INCLUDES: ME, NH, VT, MA, CT, NY, NJ, PA, DE, MD, DC, VA & NC
- MW/SOUTH INCLUDES: OH, KY, TN, GA, MI, IN, AL, WI, IL, MS, MN, IA, MO, AR, LA, ND, SD, NE, KS, OK, TX & CO
- NORTHWEST INCLUDES: ID, WA, OR & CA

PROVIDE 2-3 WEEKS FOR DELIVERY FROM PURCHASE ORDER DATE. PRICE DOES NOT INCLUDE \$15/PALLET PER 2 CY SUPERSACK

\* DENOTES A SPECIAL ORDER ITEM - DOWNPAYMENTS REQUIRED ON ALL SPECIAL ORDER ITEMS - PROVIDE 2-3 WEEKS FOR DELIVERY FROM DOWNPAYMENT DATE.



SUSTAINABLU focuses on design integration, project delivery, and products for on-structure stormwater management and green infrastructure. Capabilities range from amenity decks, green roofs, blue roofs, solar roofs and smart leak detection systems, providing the most complete line for effective On-Structure Stormwater Management systems and products available.

With on-staff designers and a network of landscape architects, contractors, architects, engineers, and developers, SUSTAINABLU is the common thread from idea conception to completion. The company provides products from top vendors around the world, tailoring products to each unique design. Product lines offered include paver pedestal, concrete roof pavers, wood deck tiles, procelain tiles, green roofing solutions, smart drains and leak detection systems, with SUSTAINABLU bringing them together with total system warranties supported by numerous roofing manufacturers.

SUSTAINABLU has completed projects in cities across North America and has representation and warehouses throughout the United States.

SUSTAINABLU  
800.333.5406

[www.SUSTAINABLU.us](http://www.SUSTAINABLU.us)

Design Integration  
technical@SUSTAINABLU.us

Product / Sale Inquiries  
sales@SUSTAINABLU.us

