

## 6" EXTENSIVE EDGE ELEMENT

Our 6" Extensive Edge Element is designed as a definite boundary between gravel / paver and growth media that allows the flow of water but not of the substrate. Specific to this product, it:

- utilizes a **"smooth slide" design** to make secure, invisible connections
- has **pre-fabricated corners** for ease of installation
- **prevents overly moist media conditions** around the perimeter or in transition areas of the roof thus preventing anaerobic growing conditions



Edge Trim ZP 150 A by

**OPTIGRÜN®**  
ROOF GREENING



- Individual Length & Clip
- Full Section
- Full Pallet



- 8'-2" per Length & Clip
- 50 Lengths & Clips per Section (408'-4")
- 4 Sections per Pallet (1,633'-4")

## TECHNICAL DATA

### System Type:

- Monolithic / Contiguous / Modular

### Materials:

- Aluminum

### Material Thickness:

- 18 GA

### Material Finish:

- Mill (natural aluminum)

### Roof / Deck Slope Constraint:

- Up to 5° slope or 1:12 roof pitch

### Water Permeability:

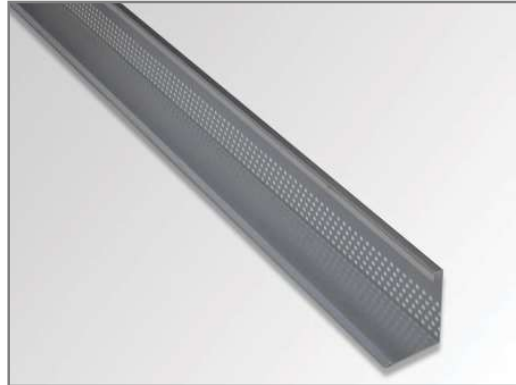
- Dependent on drainage/retention board chosen

### Vegetated Roofing Use:

- Extensive vegetated roofs

### Installation Requirements:

- Lay edge profile sections end to end on top of protective fleece, with foot of restraint toward vegetative portion of roof
- Slide Male Clips into Female Lengths
- Connect all components as shown on edging plan



**Female Length [443-EDG-06F]**  
Dimensions (H x W x L): 6" x 4 1/2" x 8'-2"  
Weight: 0.67 lbs. / LF



**Male Clip [443-EDG-06M]**  
Dimensions (H x W x L): 5 3/4" x 4 1/4" x 5"



**Corner [443-EDG-90]**  
Dimensions (H x W x L): 6" x 4 1/2" x 7 7/8" (each side)