

FLEX LINE CONCRETE PAVERS

Our Flex Line Concrete Pavers are hydraulically pressed to superior European standards. Suitable for use in a diverse range of applications and design needs, these pavers offer many advantages:

- **high compressive strength** and durability comparable to stone, thanks to its unique manufacturing process
- stylish and strong, these pavers are **superior to conventional concrete pavers** in appearance and performance
- ideal for **heavy traffic applications**
- available in a **wide variety of paver sizes, colors, designs, and textures** to accent any building, decor, or landscaping
- system provides a **uniform and even spacing** and can accommodate custom designs to fit special paving patterns



LEED Credits available for:

- Sustainable Sites (SS)
- Materials & Resources (MR)



• Special order product



• Full Pallet
• Full Load



• 88 ft² per Pallet
• 22 Pallets per Load (1,936 ft²)

TECHNICAL DATA

Paver Dimensions (L x W x H):

- FCP-SC-12/24** 11 3/4" x 23 1/2" x 2"
- FCP-SC-18/18** 17 5/8" x 17 5/8" x 2"
- FCP-SC-24/24** 23 7/8" x 23 7/8" x 2"
- FCP-SC-36/24** 35 7/8" x 23 7/8" x 2"
- FCP-SC-48/24** 47 7/8" x 23 7/8" x 2 1/2"

*Additional sizes and thicknesses available

Paver Weight:

- 23 lbs. / ft²

Compressive Strength:

- 9,705 - 11,385 lbs. / in²

Water Absorption (ASTM C 140):

- 3.5 - 3.6%

Freeze-Thaw Durability (ASTM C 67):

- 0.8 - 1.0%

Coefficient of Friction (ASTM C 1028-89):

- 0.70 - 0.74 (wet)
- 0.80 - 0.84 (dry)

Stain Resistance (ISO 10545-14):

- Class 5

Fire Rating:

- Class A

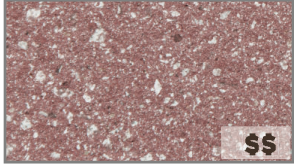
Building Strength & Breaking Load:

- Class 14

Abrasion Resistance (ASTM C 418):

- 9.5 cm³ / cm²
- 50%

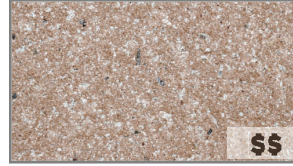
QUARRY STONE FINISH



BRICK RED



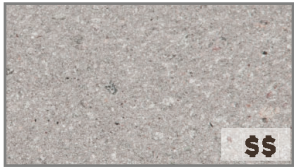
CARIBBEAN GOLD



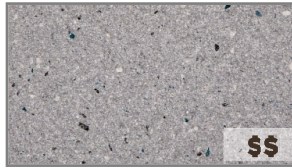
BLEACHED CORAL



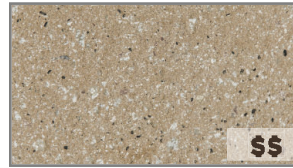
CHESTNUT BRICK



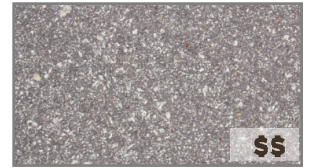
GREY STONE



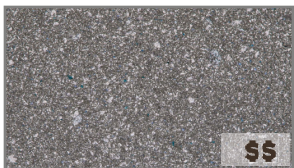
SANDY DUNE



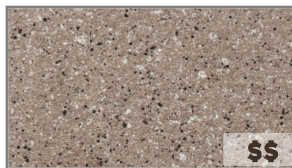
CALIFORNIA GOLD



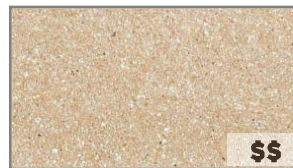
MERLOT



SILVERSTONE



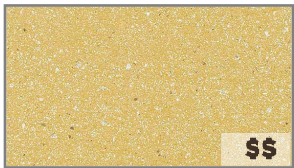
DESERT TAN



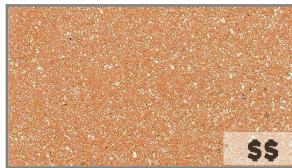
GRIS



BURGUNDY



TUSCAN



ELIXIR



PEARL



PAPER WHITE



NATURAL TAN



ARCTIC WHITE



EMBER

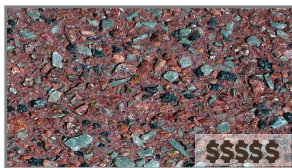


SHIRE

EXPOSED AGGREGATE FINISH



AGATE



DAHLIA



RIPARIAN



VIENNA

TEXTURES



SLATE

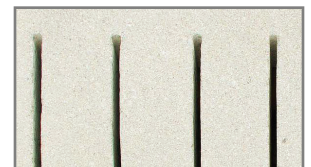


DIAMOND

SPECIAL APPLICATIONS



ADA COMPLIANT



SLOTTED

\$ Cost in relation to flex line concrete pavers
 Quarry stone colors available in textured finishes
 314-FCP 01/21